

Express Nails

Zinc



CONCRETE BRICK BLOCK

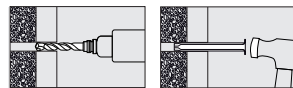
CORROSION RATING



Clean, dry & low humidity environments



An underestimated rapid hammer-set anchor for concrete and masonry, ideal for interior timber-work such as battens and frames.



Drill required diameter hole

Hammer nail through fixture

Technical Data

Substrate	Concrete $\geq 25\text{N/mm}^2$		Fletton Brick 30N/mm ²		Cheshire Brick 45N/mm ²		Class B Eng. Brick 75N/mm ²	
	6.0	8.0	6.0	8.0	6.0	8.0	6.0	8.0
Size \varnothing (mm)	6.0	8.0	6.0	8.0	6.0	8.0	6.0	8.0
Drill Hole \varnothing (mm)	6.0	8.0	6.0	8.0	6.0	8.0	6.0	8.0
Fixture Clearance Hole \varnothing (mm)	7.0	9.0	7.0	9.0	7.0	9.0	7.0	9.0
Min. Embed. Depth (mm)	30	40	30	40	30	40	30	40
Min. Drill Hole Depth (mm)	40	50	40	50	40	50	40	50
Rec. Tensile Load (kN)	0.52	1.50	0.48	0.61	0.29	0.53	0.28	0.62
Max Rec. Load (kg)	52	150	48	61	29	53	28	62

28-150KG

Product Code	Size (mm)	MFT* (mm)	Pack Qty (pcs)	Carton Qty (packs)	Pallet Qty (packs)
--------------	-----------	-----------	----------------	--------------------	--------------------

BOX

00650EN	6.0 x 50	20	200	8	240
00660EN	6.0 x 60	30	100	10	300
00680EN	6.0 x 80	50	100	10	300
00870EN	8.0 x 70	30	100	10	300
00890EN	8.0 x 90	50	50	18	648
08110EN	8.0 x 110	70	50	10	300
08130EN	8.0 x 130	90	50	10	300
08150EN	8.0 x 150	110	50	8	240
08180EN	8.0 x 180	140	50	8	240

TYPE-EXN

SUB TYPE-EXN0

TIMBAG

00660ENB	6.0 x 60	30	90	5	600
00680ENB	6.0 x 80	50	70	5	600
00890ENB	8.0 x 90	50	45	5	600
08110ENB	8.0 x 110	70	35	5	600
08150ENB	8.0 x 150	110	30	5	600

TYPE-BAG

SUB TYPE-BAG32

TIMPAC

00660ENP	6.0 x 60	30	8	5	-
00680ENP	6.0 x 80	50	6	5	-
00890ENP	8.0 x 90	50	6	5	-
08110ENP	8.0 x 110	70	4	5	-
08130ENP	8.0 x 130	90	6	5	-

TYPE - PAK

SUB TYPE - PAK73

*MFT = MAX FIXTURE THICKNESS

Wirehangers

Zinc



CONCRETE

CORROSION RATING



Clean, dry & low humidity environments

Specifically designed for use in the suspended ceiling industry when securing suspension wires to concrete beams.



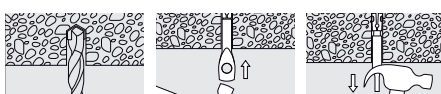
All Steel Non-Flammable Fixing

• Conforms to BS 7671:2018

Technical Data

188KG

Substrate	Concrete $\geq 25\text{N/mm}^2$
Size \varnothing (mm)	6.0
Drill Hole \varnothing (mm)	6.0
Embedment Depth (mm)	45
Min. Embedment Depth (mm)	50
Rec. Tensile Load (kN)	1.88
Max Rec. Load (kg)	188



Drill required diameter hole

Lightly tap the anchor into the hole

Set anchor using a claw hammer

Product Code	Size $\varnothing \times L$ (mm)	Eye \varnothing (mm)	Pack Qty (pcs)	Carton Qty (packs)	Pallet Qty (packs)
--------------	----------------------------------	------------------------	----------------	--------------------	--------------------

BOX

0660WH	6.0 x 60	6.3	100	18	648
--------	----------	-----	-----	----	-----

TYPE - WHG

SUB TYPE - WHG01

Ceiling Anchors

Zinc



CONCRETE

CORROSION RATING



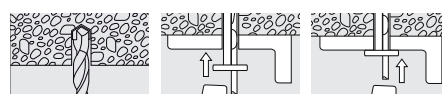
Clean, dry & low humidity environments

A rapid light duty hammer-set anchor for attaching sheet metal, plastic or wood to concrete or masonry. Made from steel making it ideal for overhead applications.

Technical Data

72KG

Substrate	Concrete $\geq 25\text{N/mm}^2$
Size \varnothing (mm)	6.0
Drill Hole \varnothing (mm)	6.0
Fixture Clearance Hole \varnothing (mm)	6.5
Min. Embedment Depth (mm)	35
Min Drill Hole Depth (mm)	45
Rec. Tensile Load (kN)	0.72
Max Rec. Load (kg)	72



Drill required diameter hole

Insert fixing through attachment

Hammer wedge into anchor to secure

Product Code	Size $\varnothing \times L$ (mm)	MFT (mm)	Pack Qty (pcs)	Carton Qty (packs)	Pallet Qty (packs)
--------------	----------------------------------	----------	----------------	--------------------	--------------------

BOX

0640CAM	6.0 x 40	5	100	10	300
0665CAM	6.0 x 65	30	100	8	240

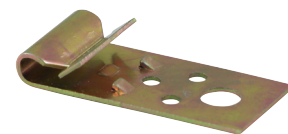
TYPE - CAM

SUB TYPE - CAM01

MFT = Max Fixture Thickness.

Vertical Flange Clips

Yellow



High strength vertical flange clip for fixing suspended wire and lighting to steel purlin.

Must only be used in a vertical position

Technical Data

72KG

Size (mm)	20 x 42
Max Rec. Load (kg)	72

Product Code	Size W x L (mm)	Hole \varnothing (mm)	Pack Qty (pcs)	Carton Qty (packs)	Pallet Qty (packs)
--------------	-----------------	-------------------------	----------------	--------------------	--------------------

BOX

VFC2042	20 x 42	6.5	100	10	500
---------	---------	-----	-----	----	-----

TYPE - WHG

SUB TYPE - WHG02

Ceiling Angle Brackets

Galvanised Steel



Versatile bracket most commonly used for installing suspended ceiling systems. Various hole sizes allow different fixings to be used.

Product Code	Size L x W x H (mm)	Hole \varnothing (mm)	T (mm)	Pack Qty (pcs)	Carton Qty (packs)	Pallet Qty (packs)
--------------	---------------------	-------------------------	--------	----------------	--------------------	--------------------

BOX

25ABC	25 x 25 x 22	4.5 & 7.0	1.0	100	18	864
-------	--------------	-----------	-----	-----	----	-----

TYPE - WHG

SUB TYPE - WHG03