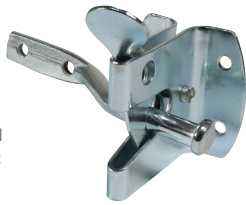


Automatic Gate Catches

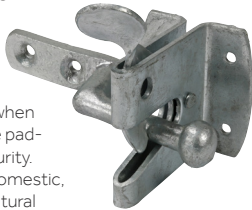
Automatic Gate Catch 50mm

Automatically latches when the gate is shut and are pad-lockable for added security. Ideal for use in light domestic applications.



Heavy Automatic Gate Catch* 50mm

Automatically latches when the gate is shut and are pad-lockable for added security. Ideal for use in heavy domestic, commercial and agricultural applications.



Technical Data		
Type	Standard	Heavy
Size (mm)	50	50
Bar Length (mm)	110	115
Backplate Size L x W (mm)	50 x 50	50 x 60
Catch Projection (mm)	50	60
Max. Padlock Shackle Ø (mm)	7	7
No. of Screw Holes - CSK / Pan	6	6
Screw Ø (mm)	4.0	4.0

Product Code		Pack		Carton	
Epoxy Black	Zinc	Size (mm)	Size (inch)	Qty (pcs)	Qty (packs)
Hot Dipped Galvanised					

BAG - EXCLUDES FIXINGS					
AGLMBB	AGLMZB	AGLMGB	50	2	1 10
-	-	AGLHGB*	50	2	1 10
TYPE - LCB			SUB TYPE - LCB03		

TIMBAG - FIXINGS INCLUDED					
AGLMBP	AGLMZP	AGLMGP	50	2	1 10
-	-	AGLHGP*	50	2	1 10
TYPE - LCP			SUB TYPE - LCP03		

* Heavy Automatic Gate Catch

Turn Button Cast Iron



Turn buttons are used for holding flush fitting doors and gates closed.

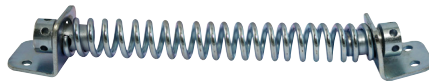
Use a 4.0 x 30mm screw to attach to door/gate

CORROSION RATINGS

Epoxy Black					Hot Dipped Galvanised				
1	2	3	4	5	1	2	3	4	5
Occasionally damp/wet rural and sheltered areas					Urban & industrial areas with a moderate salt atmosphere				

Product Code		Pack		Carton	
Epoxy Black	Hot Dipped Galvanised	Size (mm)	Size (inch)	Qty (pcs)	Qty (packs)
BAG - EXCLUDES FIXINGS					
TB2BB	TB2GB	50	2	1	600
TYPE - LCB			SUB TYPE - LCB06		
TIMBAG - FIXINGS INCLUDED					
TB2BP	TB2GP	50	2	1	20
TYPE - LCP			SUB TYPE - LCP06		

Gate Spring



Gate springs provide automatic closure for single action gates. The spring tension is adjustable for increasing or decreasing the gate closing force.

CORROSION RATINGS

Epoxy Black					Zinc				
1	2	3	4	5	1	2	3	4	5
Occasionally damp/wet rural and sheltered areas									

Technical Data		
Size (mm)	200	250
Spring Length (mm)	141	191
Backplate Size (mm)	30 x 30	30 x 30
No. of Screw Holes	4	4
Screw Ø (mm)	4.0	4.0

Product Code		Pack		Carton	
Epoxy Black	Zinc	Size (mm)	Size (inch)	Qty (pcs)	Qty (packs)
TIMBAG - FIXINGS INCLUDED					
GS8BB	GS8ZB	250	8	1	15
GS10BB	GS10ZB	250	10	1	10
TYPE - LCB			SUB TYPE - LCB04		

TIMBAG - FIXINGS INCLUDED					
GS8BP	GS8ZP	250	8	1	15
GS10BP	GS10ZP	250	10	1	10
TYPE - LCP			SUB TYPE - LCP04		

Cabin Hook Cast Iron



Ideal for retaining doors and gates in an open position in heavy domestic and agricultural applications. Made from cast iron for added strength and durability.

CORROSION RATINGS

Epoxy Black				
1	2	3	4	5
Occasionally damp/wet rural and sheltered areas				

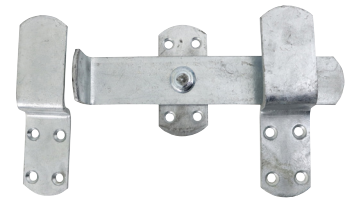
Hot Dipped Galvanised

1	2	3	4	5
Urban & industrial areas with a moderate salt atmosphere				

Technical Data	
Size (mm)	75 - 300
Backplate Size L x W (mm)	45 x 45
No. of Screw Holes	4
Screw Ø (mm)	4.0

Product Code		Pack		Carton	
Epoxy Black	Hot Dipped Galvanised	Size (mm)	Size (inch)	Qty (pcs)	Qty (packs)
BAG - EXCLUDES FIXINGS					
523467	523656	75	3	1	200
523258	523219	100	4	1	200
523963	523953	150	6	1	150
523458	523632	200	8	1	100
523957	523454	250	10	1	50
523326	523565	300	12	1	50
TIMBAG - FIXINGS INCLUDED					
527115	527568	75	3	1	10
527225	527541	100	4	1	10
527998	527114	150	6	1	10
527651	527554	200	8	1	10
527478	527665	250	10	1	10
TYPE - LCB / LCP			SUB TYPE - LCP05 / LCB05		

Kick Over Stable Latch



Kick over stable latches are ideal for stables and agricultural applications where a hands free operation is required.

Hot Dipped Galvanised

1	2	3	4	5
Urban & industrial areas with a moderate salt atmosphere				

Technical Data	
Size (mm)	240
Bar Length (mm)	240
Backplate Size L x W (mm)	110 x 45
Seat Brackets Size L x W (mm)	45 x 170
Seat Brackets Backplate Size L x W (mm)	45 x 80
Catch Projection (mm)	140
No. of Screw Holes - Countersunk / Pan	12
Screw Ø (mm)	5.0

Product Code		Pack		Carton	
Hot Dipped Galvanised	Size (mm)	Size (inch)	Qty (pcs)	Qty (packs)	
TIMBAG - FIXINGS INCLUDED					
KOSLG	240	9 1/2	1	10	
TYPE - FGC			SUB TYPE - FGC01		

Cabin Hook Wire Pattern



Ideal for retaining doors and gates in an open position in light domestic applications.

CORROSION RATINGS

Epoxy Black					Zinc				
1	2	3	4	5	1	2	3	4	5
Occasionally damp/wet rural and sheltered areas									

Technical Data	
Size (mm)	100 - 300
Backplate Size L x W (mm)	40 x 40
No. of Screw Holes	8
Screw Ø (mm)	4.0

Product Code		Pack		Carton	
Epoxy Black	Zinc	Size (mm)	Size (inch)	Qty (pcs)	Qty (packs)
BAG - EXCLUDES FIXINGS					
WCH4BB	WCH4ZB	100	4	1	10
WCH6BB	WCH6ZB	150	6	1	10
WCH8BB	WCH8ZB	200	8	1	10
WCH10BB	WCH10ZB	250	10	1	10
WCH12BB	WCH12ZB	300	12		
TIMBAG - FIXINGS INCLUDED					
WCH4BP	WCH4ZP	100	4	1	10
WCH6BP	WCH6ZP	150	6	1	10
WCH8BP	WCH8ZP	200	8	1	10
TYPE - LCB / LCP			SUB TYPE - LCB / LCP05		