

# Furniture Fixings

## Bales Catch

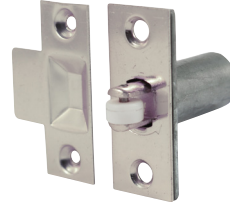


Technical Data	
Size (mm)	20
Case D x Ø (mm)	20 x 21
Faceplate H x W (mm)	57 x 23

Used for securing internal doors that require just a push/pull handle. Adjustable roller to adjust the closing tension of the door. Supplied with matching strike plate in electro brass.

Product Code			
Electro Brass	Size (mm)	Pack Qty (pcs)	Carton Qty (packs)
<b>TIMPAC</b>			
BC19P	20	2	5
TYPE - PAK		SUB TYPE - PAK56	

## Adjustable Roller Catch



Technical Data	
Size (mm)	39
Case D x Ø (mm)	39 x 19
Faceplate H x W (mm)	59 x 23.5

Used for securing internal doors that require just a push/pull handle. Adjustable roller to adjust the closing tension of the door. Supplied with matching strike plate in electro brass or nickel plated finishes.

Product Code			
Electro Brass	Nickel	Size (mm)	Carton Qty (packs)
<b>TIMPAC</b>			
ARCBRASSP	ARCNICKELP	39	5
TYPE - PAK		SUB TYPE - PAK56	

## Magnetic Catch



A surface mounted light duty magnetic catch for securing cupboard or cabinet doors.

Product Code				
White	Size (mm)	Strength (kg)	Pack Qty (pcs)	Carton Qty (packs)
<b>TIMPAC</b>				
MC4P	40 x 22	4.0	2	5
MC6P	58 x 22	6.0	2	5
TYPE - PAK		SUB TYPE - PAK56		

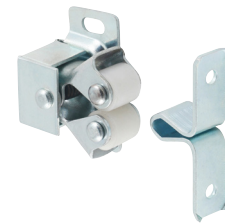
## Double Ball Catch



A solid brass push fit catch for securing cupboard or cabinet doors.

Product Code				
Electro Brass	Chrome	Size (mm)	Pack Qty (pcs)	Carton Qty (packs)
<b>TIMPAC</b>				
DBC40BRASSP	DBC40CHROME P	43	2	5
DBC50BRASSP	DBC50CHROME P	50	2	5
TYPE - PAK		SUB TYPE - PAK56		

## Double Roller Catch



A surface mounted push fit catch for securing cupboard or cabinet doors.

Product Code			
Zinc	Size (mm)	Pack Qty (pcs)	Carton Qty (packs)
<b>TIMPAC</b>			
DRP	28 x 32	2	5
TYPE - PAK		SUB TYPE - PAK56	

## Modesty Block



Used for the assembly of boards at 90 degrees.

- Size - 34 x 13 x 13mm
- Screw Hole Ø - 4.8mm

Product Code			
White	Brown	Pack Qty (pcs)	Carton Qty (packs)
<b>TIMBAG</b>			
MBWHITEB	MBBROWNB	65	5
TYPE - BAG		SUB TYPE - BAG34	
<b>TIMPAC</b>			
MBWHITEP	MBBROWNP	10	5
TYPE - PAK		SUB TYPE - PAK56	

## Knock Down Block



Used for the assembly of boards at 90 degrees. Secured with a bolt into the thread of the second block which draws the two fittings together.

- Size - 35 x 25 x 12mm
- Screw Hole Ø - 4.9mm

Product Code			
White	Brown	Pack Qty (pcs)	Carton Qty (packs)
<b>TIMPAC</b>			
KDWHITEP	KDBROWNP	10	5
TYPE - PAK		SUB TYPE - PAK56	

## Dummy Draw Connector NEW



Used for the semi-permanent fixing of dummy draw fronts to kitchen carcasses. The design allows for some adjustment during fitting to ensure a flush finish.

- Screw Hole Ø - 3.5mm

Product Code		
White	Pack Qty (pcs)	Carton Qty (packs)
<b>TIMPAC</b>		
DDCP	2	5
TYPE - PAK		SUB TYPE - PAK56

## Dual Direction Panel Connector NEW



Two piece clip used for flush semi-permanent fixing of panels or dummy drawer fronts. The dual direction design allows fixing onto the base by clipping straight on or at a right angle.

- Screw Hole Ø - 3.5mm

Product Code		
White	Pack Qty (pcs)	Carton Qty (packs)
<b>TIMPAC</b>		
DDPCP	2	5
TYPE - PAK		SUB TYPE - PAK56