

Fire Door Hinges & Intumescent Accessories

Grade 11 Ball Bearing Fire Door Hinges - Carbon Steel

NEW

Electro Brass



- Smooth ball bearing action
- Suitable for 30 & 60 minute fire doors
- Ideal for heavy doors up to 80kg
- For doors with heavy traffic - tested to 200,000 cycles
- CE Approved - BS EN 1935



Fixings Included



Polished Chrome Satin Chrome Satin Nickel

Technical Data

Size L x W (mm)	102 x 76
Thickness (mm)	2.7
Knuckle Ø (mm)	12.5
Hole Ø (mm)	7.2
Rec. Screw Ø (mm / imp)	5.0 / 10
No. of CSK Screws (per pair)	16
Max. Door Weight (kg)	80

Product Code

Electro Brass	Polished Chrome	Satin Chrome	Satin Nickel	L x W (mm)	Pack Qty (pairs)	Carton Qty (packs)
BOX						
334753	334988	334040	334555	102 x 76	1	40
TYPE - FHB				SUB TYPE - FHB03		

Grade 7 Ball Bearing Fire Door Hinges - Carbon Steel

NEW

Electro Brass



- Smooth ball bearing action
- Suitable for 30 & 60 minute fire doors
- Ideal for heavy doors up to 40kg
- For doors with heavy traffic - tested to 200,000 cycles
- CE Approved - BS EN 1935



Fixings Included



Polished Chrome Satin Chrome Satin Nickel Epoxy Black Epoxy White Antique Brass

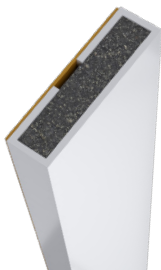
Technical Data

Size L x W (mm)	76 x 51
Thickness (mm)	2.2
Knuckle Ø (mm)	11.0
Hole Ø (mm)	6.2
Rec. Screw Ø (mm / imp)	4.5
No. of CSK Screws (per pair)	12
Max. Door Weight (kg)	40

Product Code

Electro Brass	Polished Chrome	Satin Chrome	Satin Nickel	Epoxy Black	Epoxy White	Antique Brass	L x W (mm)	Pack Qty (pairs)	Carton Qty (packs)
BOX									
334101	334159	334654	334789	334321	334267	334034	76 x 51	1	60
TYPE - FHB							SUB TYPE - FHB02		

Intumescent Fire Only Seals

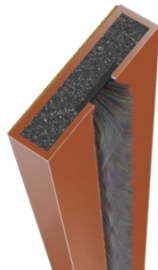


- Tested to BS476 Part 22, BS EN 1634-1
- Laboratory ageing tested for 100 years
- Rapid high-pressure multi-directional expansion
- Supplied with self adhesive backing for ease of installation

Product Code

White	Brown	W x D (mm)	L (mm)	Fire Rating (mins)	Pack Qty (pcs)	Carton Qty (packs)
SINGLE DOOR PACK						
487762	487284	10 x 4	1050	30	5	20
487661	487097	15 x 4	1050	30 & 60	5	20
MULTI PACK (4 DOORS)						
487697	487111	10 x 4	2100	30	10	20
487395	487189	15 x 4	2100	30 & 60	10	20
TYPE - ITS				SUB TYPE - ITS01		

Intumescent Fire & Smoke Seals

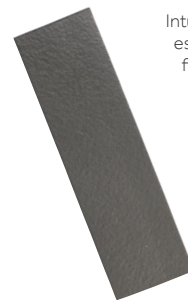


- Tested to BS476 Part 22, BS EN 1634-1
- Laboratory ageing tested for 100 years
- Rapid high-pressure multi-directional expansion
- Supplied with self adhesive backing for ease of installation

Product Code

White	Brown	W x D (mm)	L (mm)	Fire Rating (mins)	Pack Qty (pcs)	Carton Qty (packs)
SINGLE DOOR PACK						
487854	487336	10 x 4	1050	30	5	20
487746	487558	15 x 4	1050	30 & 60	5	20
MULTI PACK (4 DOORS)						
487054	487675	10 x 4	2100	30	10	20
487891	487777	15 x 4	2100	30 & 60	10	20
TYPE - ITS				SUB TYPE - ITS01		

Intumescent Hinge Pads



- Intumescent hinge pads are an essential requirement when fitting hinges to fire doors as they seal any gaps in the rebate and prevent the transfer of heat from the hinge to the door and frame in the event of a fire.
- Tested to BS476 Part 22, BS EN 1634-1

Product Code

Product Code	W x D (mm)	L (mm)	Fire Rating (mm)	Pack Qty (pcs)	Carton Qty (packs)
BAG					
487385	31 x 0.8	100	30 & 60	6	250
TYPE - ITS			SUB TYPE - ITS01		