

# Timber Hangers



## No Tag Timber Hanger



Superior design allows the use of fewer nails for faster installation. Increased leg lengths, all widths can take up to a 220mm deep joist.

**Rapid Installation Time**

Technical Data	
Width (mm)	All
Length (mm)	All
Bearing (mm)	60
Characteristic value (kN) Eurocode 5	14.41
No. of nail holes	23
Safe working load (kN) BS5628 - Short term	7.21
Safe working load (kN) BS5628 - Medium term	6.86
Safe working load (kN) BS5628 - Long term	6.0

Product Code	W x L x B (mm)	Joist W x H (mm)	MOQ (pcs)	Qty Break (pcs)
<b>BOX</b>				
<b>Galvanised Steel - 0.8mm</b>				
44TH	44 x 281 x 60	44 x 125 to 220	20	100
47TH	47 x 279 x 60	47 x 125 to 220	20	100
63TH	63 x 271 x 60	63 x 125 to 220	20	100
75TH	75 x 265 x 60	75 x 125 to 220	20	100
90TH	90 x 258 x 60	90 x 125 to 220	20	100
100TH	100 x 253 x 60	100 x 125 to 220	10	50
TYPE - BMW			SUB TYPE - BMW03	

## Standard Timber Hanger



Designed to give a quick and simple solution for various timber to timber connections such as joists and stairwell trimmings.

Increased leg lengths, all widths can take up to a 225mm deep joist.

Technical Data	
Width (mm)	All
Length (mm)	All
Bearing (mm)	50
Characteristic value (kN) Eurocode 5	15.44
No. of nail holes	32
Safe working load (kN) BS5628 - Short term	7.72
Safe working load (kN) BS5628 - Medium term	7.35
Safe working load (kN) BS5628 - Long term	6.43

Product Code	W x L x B (mm)	Joist W x H (mm)	MOQ (pcs)	Qty Break (pcs)
<b>BOX</b>				
<b>Galvanised Steel - 1.0mm</b>				
125TH	125 x 300 x 50	125 x 100 to 225	10	50
150TH	150 x 300 x 50	150 x 100 to 225	10	50
TYPE - BMW			SUB TYPE - BMW03	
<b>A2 - 304 Stainless Steel - 1.0mm</b>				
47THS	47 x 277 x 50	47 x 100 to 225	20	100
76THS	76 x 300 x 50	76 x 100 to 225	20	100
100THS	100 x 300 x 50	100 x 100 to 225	10	50
TYPE - BMW			SUB TYPE - BMW03	

## Long Leg Timber Hanger



Specifically designed for deeper timber to timber applications. Ideal for loft conversions and "under-slung" floor joist applications where the hanger extends below the supporting beam.

Increased leg lengths, all widths can take up to a 250mm deep joist.

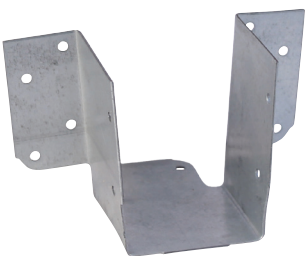
Technical Data	
Width (mm)	All
Length (mm)	All
Bearing (mm)	50
Characteristic value (kN) Eurocode 5	28.04
No. of nail holes	46
Safe working load (kN) BS5628 - Short term	14.02
Safe working load (kN) BS5628 - Medium term	13.35
Safe working load (kN) BS5628 - Long term	11.68

Product Code	W x L x B (mm)	Joist W x H (mm)	MOQ (pcs)	Qty Break (pcs)
<b>BOX</b>				
<b>Galvanised Steel - 1.2mm</b>				
44450LTH	44 x 453 x 50	44 x 150 to 250	10	50
47450LTH	47 x 445 x 50	47 x 150 to 250	10	50
76450LTH	76 x 435 x 50	76 x 175 to 250	10	50
90450LTH	90 x 425 x 50	90 x 150 to 250	10	50
100450LTH	100 x 420 x 50	100 x 150 to 250	10	50
125450LTH	125 x 450 x 50	125 x 175 to 250	10	50
150450LTH	150 x 450 x 50	150 x 175 to 250	10	50
TYPE - BMW			SUB TYPE - BMW03	

### Installation Guidelines

- Ensure the back plate of the hanger sits flat against the timber.
- Joist should be square cut and sit tight to the back of the hanger.
- Fix the joist in every hole with 3.75 x 30 galvanised square twist nails (for stainless steel applications use 2.36 x 30 stainless steel annular ringshank nails).

## Mini Timber Hanger



Technical Data			
Type	THM	THMSS	THMP
Material	Galv	SS	Galv
Width (mm)	All	All	All
Characteristic value (kN) Eurocode 5	8.34	9.5	9.5
Safe working load (kN) BS5628 - Short term	4.17	4.75	4.75
Safe working load (kN) BS5628 - Medium term	3.97	4.53	4.53
Safe working load (kN) BS5628 - Long term	3.47	3.96	3.96

### Installation Guidelines

- Ensure the back plate of the hanger sits flat against the timber.
- Joist should be square cut & sit tight to the back of the hanger.
- Fix the joist in every hole with 3.75 x 30 galvanised square twist nails (for stainless steel applications use 2.36 x 30 stainless steel annular ringshank nails).

Product Code	W x H x B (mm)	Joist W x H (mm)	No. of Nail Holes	MOQ (pcs)	Qty Break (pcs)
<b>BOX</b>					
<b>Galvanised Steel - 1.0mm</b>					
38THM	38 x 75 x 50	38 x 75 to 100	14	20	100
44THM	44 x 68 x 50	44 x 75 to 100	14	20	100
47THM	47 x 67 x 50	47 x 75 to 100	14	20	100
<b>Larger Joist Size</b>					
38THMP	38 x 100 x 50	38 x 100 to 150	20	20	100
44THMP	44 x 97 x 50	44 x 100 to 150	20	20	100
47THMP	47 x 96 x 50	47 x 100 to 150	20	20	100
<b>A2 - 304 Stainless Steel - 1.0mm</b>					
44THMS	44 x 97 x 50	44 x 75 to 100	20	10	50
47THMS	47 x 96 x 50	47 x 75 to 100	20	10	50
TYPE - BMW			SUB TYPE - BMW03		

Timber to timber joist hangers, suitable for light duty applications such as ceiling joists, decking and trimmings.

**NOTE:** Tag on base of the hanger helps avoid rotation.