

Chemical Resin & Accessories



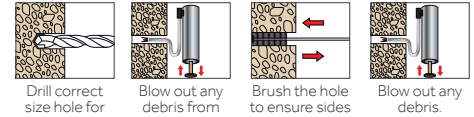
Chemical Resin



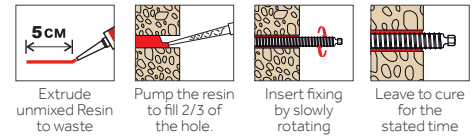
TIMCO's chemical resin range offers an effective anchoring system for fixing into concrete and masonry.

The stress-free nature of this solution gives greater flexibility when anchoring closer to a substrate edge such as balustrade installation.

- Ready to use
- Uses standard tools
- Less wastage
- No leakage
- Faster & easier to use
- Low extrusion force
- T-Flow™ nozzle included
- Close edge & axial spacing



STEPS 2 - 4 REPEAT x4



Technical Data

Resin Type	Rec. Tensile Load (Kn) (Performance Data Concrete >25N/mm2)					
Stud (5.8 Grade) Size	M8	M10	M12	M16	M20	M24
PE	4.9	7.5	10.6	12.3	19.9	27.4
PESF	5.8	8.1	11.6	19.8	29.1	33.1
VESF	9.1	13.8	19.4	26.8	35.7	44.6
Embedment Depth (mm)	80	90	110	125	170	210
Cartridge Size	Approx Holes Per Cartridge (At Standard Embedment Depth)					
300ml	66	41	25	13	5	3
410ml	92	57	34	18	8	4
Gel & Cure Times	VESF / PESF / PE					
Base Material (°C)	35	25	15	5	-5	-10*
Typical Gel Time (mins)	3	5	9	20	40	50
Min. Load Time (mins)	20	30	60	90	180	240

*Resin temperature must be at least 20°C

Vinylester Styrene Free Resin



- European Technically Approved (ETA) low odour resin used in safety critical fixing
- For enclosed, poorly ventilated, damp and wet environments
- High performance resin with consistent results
- Offering exceptional tensile strength in a range of environments and conditions



Product Code	Size	Approval	Carton Qty (packs)	Pallet Qty (packs)
VESF410	410ml	ETA / WRAS / CE	12	1260
TYPE - CPE				
SUB TYPE - CPE03				

Polyester Styrene Free Resin



- European Technically Approved (ETA) low odour resin used in non-safety critical fixing
- For day to day non-safety critical fixing
- For enclosed or poorly ventilated environments



Product Code	Size	Approval	Carton Qty (packs)	Pallet Qty (packs)
PESF310	300ml	ETA / CE	12	1260
TYPE - CPE				
SUB TYPE - CPE02				

Polyester Resin



- An economic resin ideal for day to day non-safety critical applications
- For areas that are well ventilated at the time of installation



Product Code	Size	Approval	Carton Qty (packs)	Pallet Qty (packs)
PE310	300ml	ETA/CE	12	1260
PE410	410ml	ETA/CE	12	1260
TYPE - CPE				
SUB TYPE - CPE01				

CARTRIDGE (T-FLOW NOZZLE INCLUDED)

Product Code	Size	Approval	Carton Qty (packs)	Pallet Qty (packs)
PE310	300ml	ETA/CE	12	1260
PE410	410ml	ETA/CE	12	1260
TYPE - CPE				
SUB TYPE - CPE01				