

Shield Anchors

Yellow

Shield Only



CONCRETE BRICK STONE



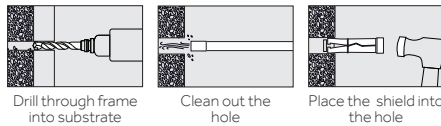
CORROSION RATING



Clean, dry & low humidity environments

Suitable for attaching a variety of fixings with metric threads such as hooks, eyes and studs.

- A three segmented expansion anchor
- Torque controlled



Product Code	Thread Ø (mm)	Shield Length (mm)	Pack Qty (pcs)	Carton Qty (packs)	Pallet Qty (packs)
BOX					
06SH	M6	45	50	18	648
08SH	M8	50	50	10	300
10SH	M10	60	50	8	240
12SH	M12	75	25	8	240
TYPE - SHA			SUB TYPE - SHA01		

NB: The tensile load tests are based upon the use of 8.8 strength bolts. However, the 'Projecting Type' are supplied with 5.8 strength bolts. This should nevertheless not unduly effect the performance of the anchor, given that this is taken into consideration when selecting the product. Please consult our technical department for further advice. Installation Note: Fix in centre line of brick 35-40mm from ends and avoid top 3 courses, edge bricks, part bricks and mortar joints. Suitable in solid brickwork with sound mortar joints only up to M12 bolt diameter.

Loose Bolt



CONCRETE BRICK STONE



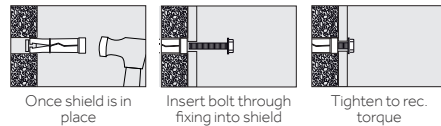
CORROSION RATING



Clean, dry & low humidity environments

Ideal for fixing through the fixture once the shield has been installed into substrate.

- Torque controlled
- Bolt Grade 8.8



Product Code	Thread Ø (mm)	Bolt Length (mm)	MFT (mm)	Pack Qty (pcs)	Carton Qty (packs)	Pallet Qty (packs)
BOX						
0610LSH	M6	50	10	100	8	240
0625LSH	M6	65	25	50	10	300
0810LSH	M8	60	10	50	8	240
0825LSH	M8	75	25	50	8	240
0840LSH	M8	90	40	25	10	300
1010LSH	M10	70	10	25	10	300
1025LSH	M10	85	25	25	10	300
1050LSH	M10	110	50	25	8	240
1075LSH	M10	135	75	25	8	240
1210LSH	M12	90	10	10	10	300
1225LSH	M12	105	25	10	10	300
1240LSH	M12	120	40	10	10	300
1260LSH	M12	140	60	10	8	240
TYPE - SHA			SUB TYPE - SHA01			

Product Code	Thread Ø (mm)	Bolt Length (mm)	MFT (mm)	Pack Qty (pcs)	Carton Qty (packs)	Pallet Qty (packs)
TIMBAG						
0610LSHB	M6	50	10	48	5	600
0625LSHB	M6	65	25	46	5	600
0810LSHB	M8	60	10	26	5	600
0825LSHB	M8	75	25	24	5	600
0840LSHB	M8	90	40	22	5	600
1010LSHB	M10	70	10	22	5	500
1025LSHB	M10	85	25	16	5	500
1050LSHB	M10	110	50	14	5	500
1075LSHB	M10	135	75	14	5	500
1260LSHB	M12	140	60	10	5	500
TYPE - BAG			SUB TYPE - BAG30			

Product Code	Thread Ø (mm)	Bolt Length (mm)	MFT (mm)	Pack Qty (pcs)	Carton Qty (packs)	Pallet Qty (packs)
TIMPAC						
0610LSHP	M6	50	10	4	10	-
0625LSHP	M6	65	25	4	10	-
0810LSHP	M8	60	10	4	10	-
0825LSHP	M8	75	25	4	10	-
0840LSHP	M8	90	40	4	10	-
1010LSHP	M10	70	10	4	10	-
1025LSHP	M10	85	25	2	10	-
1050LSHP	M10	110	50	2	10	-
1075LSHP	M10	135	75	2	10	-
1260LSHP	M12	140	60	2	10	-
TYPE - PAK			SUB TYPE - PAK49		MFT = Max Fixture Thickness	

Projecting Bolt



CONCRETE BRICK STONE



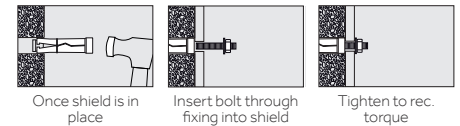
CORROSION RATING



Clean, dry & low humidity environments

The projecting stud allows the fixture to be positioned into place and then fastened secure.

- Torque controlled
- Stud Grade 5.8



Product Code	Thread Ø (mm)	Bolt Length (mm)	MFT (mm)	Pack Qty (pcs)	Carton Qty (packs)	Pallet Qty (packs)
BOX						
0810PSH	M8	70	10	50	8	240
0825PSH	M8	85	25	50	8	240
0860PSH	M8	120	60	50	8	240
1015PSH	M10	85	15	25	10	300
1030PSH	M10	100	30	25	8	300
1060PSH	M10	130	60	25	8	300
1215PSH	M12	105	15	10	10	300
1230PSH	M12	120	30	10	10	300
1275PSH	M12	165	75	10	8	240
TYPE - SHA			SUB TYPE - SHA01			

Product Code	Thread Ø (mm)	Bolt Length (mm)	MFT (mm)	Pack Qty (pcs)	Carton Qty (packs)	Pallet Qty (packs)
TIMBAG						
0825PSHB	M8	85	25	26	5	600
0860PSHB	M8	120	60	22	5	600
1015PSHB	M10	85	15	16	5	600
1030PSHB	M10	100	30	15	5	600
1060PSHB	M10	130	60	14	5	500
1230PSHB	M12	120	30	8	5	600
TYPE - BAG			SUB TYPE - BAG30			

Product Code	Thread Ø (mm)	Bolt Length (mm)	MFT (mm)	Pack Qty (pcs)	Carton Qty (packs)	Pallet Qty (packs)
TIMPAC						
0825PSHP	M8	85	25	4	10	-
0860PSHP	M8	120	60	4	10	-
1015PSHP	M10	85	15	2	10	-
1030PSHP	M10	100	30	2	10	-
1060PSHP	M10	130	60	2	10	-
1230PSHP	M12	120	30	2	10	-
TYPE - PAK			SUB TYPE - PAK49		MFT = Max Fixture Thickness	

Technical Data

Substrate	Concrete ≥25N/mm2				Fletton Brick 30N/mm2				Cheshire Brick 45N/mm2				Class B Eng. Brick 75N/mm2			
	M6	M8	M10	M12	M6	M8	M10	M12	M6	M8	M10	M12	M6	M8	M10	M12
Thread Ø (mm)	6	8	10	12	6	8	10	12	6	8	10	12	6	8	10	12
Socket Size (mm)	10	13	17	19	10	13	17	19	10	13	17	19	10	13	17	19
Drill Hole Ø (mm)	12.0	14.0	16.0	20.0	12.0	14.0	16.0	20.0	12.0	14.0	16.0	20.0	12.0	14.0	16.0	20.0
Fixture Clearance Hole Ø (mm)	8.0	10.0	12.0	14.0	8.0	10.0	12.0	14.0	8.0	10.0	12.0	14.0	8.0	10.0	12.0	14.0
Embedment Depth (mm)	45	50	60	75	45	50	60	75	45	50	60	75	45	50	60	75
Min Drill Hole Depth (mm)	55	60	70	85	55	60	70	85	55	60	70	85	55	60	70	85
Centre Spacing (mm)	135	150	180	225	-	-	-	-	-	-	-	-	-	-	-	-
Edge Distance (mm)	70	75	90	120	-	-	-	-	-	-	-	-	-	-	-	-
Min Structure Thickness (mm)	90	100	120	150	-	-	-	-	-	-	-	-	-	-	-	-
Rec. Tightening Torque (Nm)	5	15	30	45	3	7	15	23	3	7	15	23	3	7	15	23
Rec. Tensile Load (kN)	1.04	2.21	2.52	3.8	1.47	1.84	1.26	1.34	0.63	1.67	1.93	1.51	0.72	0.41	0.85	-
Max Rec. Load (kg)	104	221	252	380	147	184	123	134	63	167	193	151	72	41	85	-

