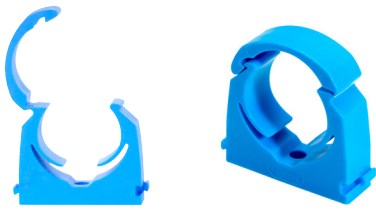


### MDPE Pipe Clip



The single hinged clip is available in sizes to fit MDPE pipe and in blue to match the pipe colour.

Product Code	Clip Type	To Suit Pipe Size (mm)	To Fit Screw Ø (mm)	Pack Qty (pcs)	Carton Qty (packs)
<b>BAG</b>					
TMS20	Single	19.0 - 21.0	3.5 - 4.5	10	100
TMS25	Single	25.0 - 27.4	3.5 - 4.5	10	50
TMS35	Single	31.8 - 35.0	3.5 - 5.0	10	50
TALTSP1	Spacer	N/A	3.5 - 4.5	100	10
TYPE - PPC			SUB TYPE - PPC01		

### EZ Joist Clip

**NEW**

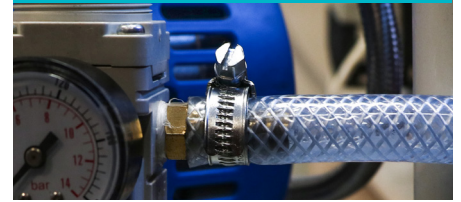


EZ Joist Clips offer a safe, quick and easy install for pipes in hard to reach places such as overhead and in between joists. Manufactured in the UK using high-quality polypropylene. All sizes of the EZ Joist Clip can be connected together via the dovetail to allow for equal pipe spacing.



Product Code	To Suit Pipe Size (mm)	Pack Qty (pcs)
<b>BAG</b>		
TALEZ15	15.0	100
TALEZ1525	15.0	25
TALEZ22	22.0	100
TALEZ2225	22.0	25
TYPE - PPC		SUB TYPE - PPC01

### Hose Clips



Zinc

Stainless Steel



Worm drive hose clips with a 7mm slotted hex.

- Manufactured to BS 5315-1991

Product Code	Zinc	Stainless Steel	Hose Size (mm)	Pack Qty (pcs)	Carton Qty (packs)
<b>PACK</b>					
HC9512P	-	-	9.5-12	4	10
HC1116P	-	-	11-16	4	10
HC1320P	-	-	13-20	4	10
HC1825P	-	-	18-25	4	10
HC2230P	-	-	22-30	4	10
HC2535P	-	-	25-35	4	10
<b>BAG</b>					
HC9512	HC9512SS	-	9.5 - 12	10	100
HC1116	HC1116SS	-	11 - 16	10	100
HC1320	HC1320SS	-	13 - 20	10	100
HC1622	-	-	16 - 22	10	100
HC1825	HC1825SS	-	18 - 25	10	100
HC2230	HC2230SS	-	22 - 30	10	50
HC2535	HC2535SS	-	25 - 35	10	50
HC3040	-	-	30 - 40	10	50
HC3550	HC3550SS	-	35 - 50	10	50
HC4055	-	-	40 - 55	10	20
HC4560	HC4560SS	-	45 - 60	10	20
HC5570	HC5570SS	-	55 - 70	10	20
HC6080	-	-	60 - 80	10	20
HC7090	HC7090SS	-	70 - 90	10	20
HC90120	HC90120SS	-	90 - 120	10	10
HC110140	HC110140SS	-	110 - 140	10	10
TYPE - PAK / PPC			SUB TYPE - PAK34 / PPC01		

### Nail In Pipe Clip

**NEW COLOUR**



Manufactured from premium grade polypropylene features a high quality zinc plated hardened and tempered nail, suitable for all types of masonry. Available in red for marking hot water pipework.

Product Code	Colour	To Suit Pipe Size (mm)	Pack Qty (pcs)
<b>BAG</b>			
NCW10	White	10.0	50
NCW15	White	15.0	50
NCW22	White	22.0	50
TALNCH15	Red	15.0	100
TALNCH1520	Red	15.0	20
TALNCH22	Red	22.0	100
TALNCH2220	Red	22.0	20
TYPE - PPC		SUB TYPE - PPC01	

### Snappit Kit

**NEW**



Snappit is a rigid pipe finish product that is great for covering unsightly, visible, copper pipework. It is the best, mess-free, alternative to paint - saving time and improving appearance.

Product Code	Colour	To Suit Pipe Size (mm)	Size (mm)	Pack Qty (pcs)
<b>BAG - KIT</b>				
TALACSNA	Anthracite Grey	18.0	15 x 200	2
TALACSNB	Black	18.0	15 x 200	2
TALACSNC	Chrome	18.0	15 x 200	2
TALACSNRG	Rose Gold	18.0	15 x 200	2
TALACSNNW	White	18.0	15 x 200	2
TYPE - PPC		SUB TYPE - PPC01		

### Pipe Collars

**NEW**



Specifically designed for soil and most boiler vent pipes, the 110mm pipe collar is available in other colours to suit application.

Product Code	Colour	To Suit Pipe Size (mm)	Pack Qty (pcs)
<b>BAG</b>			
TALPC110BL	Black	110	1
TALPC110C	Chrome	110	1
TALPC110GR	Grey	110	1
TALPC110WH	White	100	1
TYPE - PPC		SUB TYPE - PPC01	



Pipe collars to conceal unsightly incisions through floors and walls. Ideal for new or retrofit application. Available in a wide range of sizes to fit various pipe sizes. Manufactured from high-grade polypropylene.

Product Code	Colour	To Suit Pipe Size (mm)	Pack Qty (pcs)
<b>BAG</b>			
TALPC1510	White	15	10
TALPC2210	White	22	10
TALPC2810	White	28	10
TALPCC1510	Chrome	15	10
TALPCC2210	Chrome	22	10
TALPCC2810	Chrome	28	10
TYPE - PPC		SUB TYPE - PPC01	

### Mixed Hose Clips

Zinc



Mixed bag containing the 8 most popular sizes. Zinc plated carbon steel worm drive hose clips with a 7mm slotted hex.

Product Code	Hose Size (mm)	Clip Qty (pcs)	Pack Qty (pcs)	Carton Qty (packs)
<b>BAG</b>				
	11 - 16	10		
	13 - 20	10		
	18 - 25	10		
HCMIX	22 - 30	10	50	6
	25 - 35	4		
	35 - 50	2		
	60 - 80	2		
	110 - 140	2		
TYPE - PPC		SUB TYPE - PPC01		