

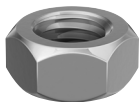
## Stainless Steel Nuts & Washers

SUPERIOR CORROSION RESISTANCE



### Hex Full Nut (DIN934)

A2 Austenitic Stainless Steel



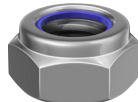
A full hex nut in A2 stainless steel, used for all bolting and fastening applications.

Product Code	Size (mm)	Socket Size (mm)	Pack Qty (pcs)	Carton Qty (packs)	Pallet Qty (packs)
<b>BOX</b>					
NH4SS	M4	7	1000	20	720
NH5SS	M5	8	1000	20	720
NH8SS	M8	13	200	20	720
NH10SS	M10	17	100	20	720
<b>SMALL BAG</b>					
NH4SSX	M4	7	10	1,000	-
NH5SSX	M5	8	10	600	-
NH6SSX	M6	10	10	350	-
NH8SSX	M8	13	10	300	-
NH10SSX	M10	17	10	150	-
NH12SSX	M12	19	5	200	-
NH16SSX	M16	24	5	100	-
<b>TIMPAC</b>					
NH5SSP	M5	8	50	10	-
NH6SSP	M6	10	40	10	-
NH8SSP	M8	13	20	10	-
NH10SSP	M10	17	10	10	-
NH12SSP	M12	19	8	10	-
NH16SSP	M16	24	2	10	-

TYPE - NUS/SSB/PAK      SUB TYPE - NUS01/SSB02/PAK28

### Nylon Nut - Type T (DIN985)

A2 Austenitic Stainless Steel



Type T hexagonal nylon nut with a metric thread. Sometimes known as a 'thin nut'.

• Conforms to ISO 10511

Product Code	Size (mm)	Socket Size (mm)	Pack Qty (pcs)	Carton Qty (packs)	Pallet Qty (packs)
<b>BOX</b>					
NT5SS	M5	8	1000	16	576
NT6SS	M6	10	500	16	576
NT10SS	M10	17	100	16	576
<b>SMALL BAG</b>					
NT5SSX	M5	8	10	600	-
NT6SSX	M6	10	10	300	-
NT8SSX	M8	13	10	300	-
NT10SSX	M10	17	10	150	-
NT12SSX	M12	19	5	200	-
NT16SSX	M16	24	5	100	-
<b>TIMPAC</b>					
NT5SSP	M5	8	20	10	-
NT6SSP	M6	10	20	10	-
NT8SSP	M8	13	10	10	-
NT10SSP	M10	17	4	10	-
NT12SSP	M12	19	4	10	-

TYPE - NUS/SSB/PAK      SUB TYPE - NUS02/SSB08/PAK29

### Hex Dome Nut (DIN1587)

A2 Austenitic Stainless Steel



A hexagonal dome nut with a metric thread. Ideal for protective or aesthetic uses.

Product Code	Size (mm)	Socket Size (mm)	Pack Qty (pcs)	Carton Qty (packs)	Pallet Qty (packs)
<b>BOX</b>					
ND5SS	M5	8	500	16	576
ND6SS	M6	10	200	20	720
<b>SMALL BAG</b>					
ND5SSX	M5	8	10	500	-
ND6SSX	M6	10	10	300	-
ND8SSX	M8	13	10	200	-
ND10SSX	M10	17	10	100	-
ND12SSX	M12	19	5	100	-

TYPE - NUS/SSB      SUB TYPE - NUS03/SSB09

### Form A Washer (DIN125-A)

A2 Austenitic Stainless Steel



A traditional and commonly used washer for clamping and spacing applications.

• Conforms to BS4320

Product Code	Size x Outer Ø (mm)	Thickness (mm)	Pack Qty (pcs)	Carton Qty (packs)	Pallet Qty (packs)
<b>BOX</b>					
WA4SS	M4 x 9	0.8	1,000	60	2160
WA5SS	M5 x 10	1.0	1,000	40	1440
WA8SS	M8 x 16	1.6	500	24	864
WA12SS	M12 x 24	2.5	200	16	576
WA16SS	M16 x 30	3.0	100	18	648
<b>SMALL BAG</b>					
WA4SSX	M4 x 9	0.8	50	800	-
WA5SSX	M5 x 10	1.0	50	600	-
WA6SSX	M6 x 12	1.6	20	700	-
WA8SSX	M8 x 16	1.6	20	500	-
WA10SSX	M10 x 20	2.0	10	480	-
WA12SSX	M12 x 24	2.5	10	250	-
WA16SSX	M16 x 30	3.0	10	180	-
<b>TIMPAC</b>					
WA5SSP	M5 x 10	1.0	50	10	-
WA6SSP	M6 x 12	1.6	50	10	-
WA8SSP	M8 x 16	1.6	30	10	-
WA10SSP	M10 x 20	2.0	20	10	-
WA12SSP	M12 x 24	2.5	10	10	-
WA16SSP	M16 x 30	3.0	6	10	-

TYPE - WAS/SSB/PAK      SUB TYPE - WAS01/SSB01/PAK30

### Form B Washer (DIN125-B)

A2 Austenitic Stainless Steel



Thinner than a Form A, used for clamping and spacing applications.

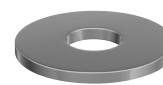
• Conforms to BS4320

Product Code	Size x Outer Ø (mm)	Thickness (mm)	Pack Qty (pcs)	Carton Qty (packs)	Pallet Qty (packs)
<b>BOX</b>					
WB6SS	M6 x 12	0.8	1,000	40	1440
WB10SS	M10 x 20	1.25	500	18	864
WB16SS	M16 x 30	2.0	100	24	864
<b>SMALL BAG</b>					
WB6SSX	M6 x 12	0.8	20	900	-
WB8SSX	M8 x 16	1.0	20	500	-
WB10SSX	M10 x 20	1.25	10	600	-
WB12SSX	M12 x 24	1.6	10	380	-
WB16SSX	M16 x 30	2.0	10	200	-

TYPE - WAS/SSB      SUB TYPE - WAS03/SSB06

### Penny / Repair Washer (DIN9054)

A2 Austenitic Stainless Steel



A large diameter washer ideal for spreading the clamping load, reducing a hole diameter and packing out. Also known as a 'mudguard' washer.

Product Code	Size x Outer Ø (mm)	Thickness (mm)	Pack Qty (pcs)	Carton Qty (packs)	Pallet Qty (packs)
<b>BOX</b>					
WP625SS	M6 x 25	1.5	200	24	864
WP825SS	M8 x 25	1.5	200	24	864
WP835SS	M8 x 35	1.5	200	24	432
WP1025SS	M10 x 25	1.5	200	24	864
WP1035SS	M10 x 35	1.5	200	12	432
<b>SMALL BAG</b>					
WP525SSX	M5 x 25	1.5	10	380	-
WP625SSX	M6 x 25	1.5	10	380	-
WP825SSX	M8 x 25	1.5	10	380	-
WP835SSX	M8 x 35	1.5	10	250	-
WP1025SSX	M10 x 25	1.5	10	400	-
WP1035SSX	M10 x 35	1.5	10	250	-
WP1235SSX	M12 x 35	1.5	10	250	-
<b>TIMPAC</b>					
WP625SSP	M6 x 25	1.5	10	10	-
WP825SSP	M8 x 25	1.5	8	10	-
WP1035SSP	M10 x 35	1.5	4	10	-

TYPE - WAS/SSB/PAK      SUB TYPE - WAS02/SSB07/PAK31