

Exterior Carriage Bolts & Hex Nuts



Exterior Carriage Bolt

Exterior (Green Organic)



DOMED



EN 14592:2008

CORROSION RATING

1	2	3	4	5
---	---	---	---	---

Urban & industrial areas with a low salt atmosphere

A domed head bolt with a square anti-spin shoulder mainly used for clamping timber or attaching ironmongery to timber.

Coated with a patented multi-layer corrosion resistant plating to withstand 500 hours

salt spray making it ideal for external applications.

Manufactured to DIN 603, DIN 934 and DIN 125-A.

Product Code	Size (mm)	Nut Socket Size (mm)	Pack Qty (pcs)	Carton Qty (packs)	Pallet Qty (packs)
BAG					
10100INCB	M10 x 100	17	10	10	1000
10150INCB	M10 x 150	17	10	6	600
10160INCB	M10 x 160	17	10	6	600
10200INCB	M10 x 200	17	10	6	600
10220INCB	M10 x 220	17	10	5	500
TYPE - IND			SUB TYPE - IND04		

Exterior (Silver Organic)



DOMED



EN 14592:2008

CORROSION RATING

1	2	3	4	5
---	---	---	---	---

Urban & industrial areas with a low salt atmosphere

A domed head bolt with a square anti-spin shoulder mainly used for clamping timber or attaching ironmongery to timber.

Coated with a patented multi-layer corrosion resistant plating to withstand 1,000 hours

salt spray test making it ideal for external applications.

Supplied with hex nuts and form A washers.

Product Code	Size (mm)	Nut Socket Size (mm)	Pack Qty (pcs)	Carton Qty (packs)	Pallet Qty (packs)
TIMBAG					
0640CBI	M6 x 40	10	10	5	600
0650CBI	M6 x 50	10	10	5	600
0675CBI	M6 x 75	10	10	5	600
06100CBI	M6 x 100	10	10	5	600
0850CBI	M8 x 50	13	10	5	600
0875CBI	M8 x 75	13	10	5	600
08100CBI	M8 x 100	13	10	5	600
08110CBI	M8 x 110	13	10	5	600
08130CBI	M8 x 130	13	10	5	400
08150CBI	M8 x 150	13	10	5	400
1075CBI	M10 x 75	17	10	5	600
10100CBI	M10 x 100	17	10	5	600
10120CBI	M10 x 120	17	10	5	400
10130CBI	M10 x 130	17	10	5	400
10150CBI	M10 x 150	17	10	5	400
10180CBI	M10 x 180	17	10	5	400
1275CBI	M12 x 75	19	10	5	600
12100CBI	M12 x 100	19	10	5	400
12130CBI	M12 x 130	19	10	5	400
TYPE - CAB			SUB TYPE - CAB03		

HDG Carriage Bolt

Hot Dipped Galvanised



DOMED



EN 14592:2008

CORROSION RATING

1	2	3	4	5
---	---	---	---	---

Urban & industrial areas with a moderate salt atmosphere

A domed head bolt with a square anti-spin shoulder mainly used for clamping timber or attaching ironmongery to timber.

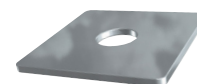
Fully threaded up to and including 150mm. Partially threaded thereafter.

Supplied with hex nuts. Manufactured to DIN 603 and DIN 934

Product Code	Size (mm)	Nut Socket Size (mm)	Pack Qty (pcs)	Carton Qty (packs)	Pallet Qty (packs)
BOX					
0850CBG	M8 x 50	13	100	9	288
0875CBG	M8 x 75	13	50	9	288
08130CBG	M8 x 130	13	50	6	288
08150CBG	M8 x 150	13	25	10	192
1075CBG	M10 x 75	17	50	8	320
10100CBG	M10 x 100	17	25	9	256
10110CBG	M10 x 110	17	25	9	288
10130CBG	M10 x 130	17	25	10	288
10150CBG	M10 x 150	17	25	6	320
10180CBG	M10 x 180	17	25	6	192
10200CBG	M10 x 200	17	10	10	192
1275CBG	M12 x 75	19	25	9	320
12100CBG	M12 x 100	19	25	6	288
12110CBG	M12 x 110	19	25	6	192
12130CBG	M12 x 130	19	10	10	192
12150CBG	M12 x 150	19	10	10	320
12180CBG	M12 x 180	19	10	10	320
12200CBG	M12 x 200	19	10	10	320
TYPE - CAB			SUB TYPE - CAB02		

HDG Square Plate Washer

Hot Dipped Galvanised



Provides a large clamping surface and therefore spreading the load of a fastening.

Product Code	Size Hole Ø x L x W x D (mm)	Pack Qty (pcs)	Carton Qty (packs)	Pallet Qty (packs)
BOX				
WS10503G	M10 x 50 x 50 x 3	100	4	128
WS12503G	M12 x 50 x 50 x 3	100	4	128
TYPE - WSH		SUB TYPE - WSH05		