

# Intumescent Letterbox

---

**Fire tested:**

Tested to BS476 part 22 1987 & BS EN 1634-1, 30 minute rated

**Smoke tested:**

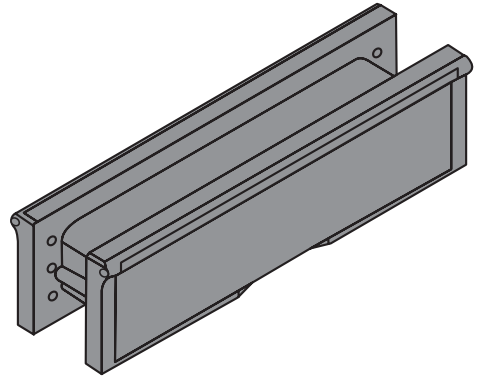
Tested to BS 476 part 31/1: 1983 & EN 1634-3: 2004

**Acoustic tested:**

Tested to BS EN ISO 140-3:1995 Achieving 32Rw dB

**Security rated:**

Tested to BS EN 13724 Clause 6.6.5

**Description:**

A high quality ABS framed draught proof letterbox, combined with an integral intumescent liner and fitted with various types of finishes of letter flap. The letterboxes are adjustable to suit door thickness of 40mm-80mm.

**Finishes Available:****272mm Intumescent letterboxes -**

Satin Anodised Aluminium - Black frame  
Satin Anodised Aluminium - Silver frame  
Polished Silver - Black frame  
Polished Gold - Black frame

**305mm Intumescent letterboxes -**

Satin Anodised Aluminium - Black frame  
Satin Anodised Aluminium - Silver frame  
Polished Silver - Black frame  
Polished Gold - Black frame

**Installation:**

1. Measure the external dimensions of the central telescopic section (including the fitted intumescent liner) to ascertain the aperture cut-out
2. Carefully cut an aperture in the fire door leaf up to 1050mm from the bottom of the door. Please ensure that the aperture is a tight fit to allow the fixing of wood screws into the corner of the face plates
3. The face plates filled with the integral draught excluders should be located to the internal face of the door
4. Locate the letter box into the cut aperture and secure using 4no. steel wood screws into each face plate
5. To maintain the fire proof integrity of the fire door ensure any gaps between the letter box and the door aperture are sealed using intumescent sealant

**Note: Testing of this product was carried out with the bottom of the letterbox at various heights from the door threshold. Optimum performance was achieved at a height of 1050mm.**