

Concrete & Masonry Fixings



Zamac Nail In Anchors

Zinc

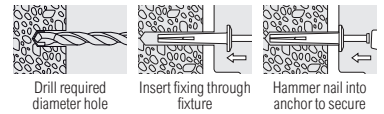


70KG

Technical Data

Substrate	Concrete $\geq 25\text{N/mm}^2$
Size \varnothing (mm)	6.0
Drill Hole \varnothing (mm)	6.0
Fixture Clearance Hole \varnothing (mm)	6.5
Min. Embedment Depth (mm)	25
Min Drill Hole Depth (mm)	35
Rec. Tensile Load (kN)	0.70
Max Rec. Load (kg)	70

A rapid light duty hammer-set anchor for attaching sheet metal, plastic or wood to concrete or masonry. Note: Not recommended for overhead applications



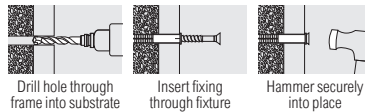
Product Code	Size (mm)	Max. Fixture Thickness (mm)	Pack Qty (pcs)	Carton Qty (packs)	Pallet Qty (packs)
BOX					
0630ZNA	6.0 x 30	5	100	10	300
0640ZNA	6.0 x 40	15	100	10	300
0650ZNA	6.0 x 50	25	100	8	240
0665ZNA	6.0 x 65	40	100	8	240

NAA01

Nylon Hammer Fixings

Zinc

A light duty hammer-set through fixing for brick, block, stone, masonry and concrete.



17-55KG

Technical Data

Substrate	Fletton Brick 30 N/mm ²			Cheshire Brick 45 N/mm ²			Class B Eng. Brick 75 N/mm ²			Concrete $\geq 25\text{N/mm}^2$		
	5.0	6.0	8.0	5.0	6.0	8.0	5.0	6.0	8.0	5.0	6.0	8.0
Size \varnothing (mm)	5.0	6.0	8.0	5.0	6.0	8.0	5.0	6.0	8.0	5.0	6.0	8.0
Drill Hole \varnothing (mm)	5.0	6.0	8.0	5.0	6.0	8.0	5.0	6.0	8.0	5.0	6.0	8.0
Embedment Depth (mm)	25	25	40	25	25	40	25	25	40	25	25	40
Min. Drill Hole Depth (mm)	35	35	50	35	35	50	35	35	50	35	35	50
Rec. Tensile Load (kN)	0.19	0.21	0.48	0.21	0.27	0.55	0.17	0.28	0.52	0.19	0.22	0.49

Product Code	Size (mm)	MFT (mm)	Driver Bit Size	Pack Qty (pcs)	Carton Qty (packs)	Pallet Qty (packs)
BOX						
50030HF	5.0 x 30	5	PZ2	200	15	540
50050HF	5.0 x 50	25	PZ2	200	16	288
60040HF	6.0 x 40	15	PZ2	200	12	288
60050HF	6.0 x 50	25	PZ2	200	12	288
60060HF	6.0 x 60	35	PZ2	200	12	288
60070HF	6.0 x 70	45	PZ2	200	12	288
60080HF	6.0 x 80	55	PZ2	200	8	192
80060HF	8.0 x 60	20	PZ3	100	8	192
80080HF	8.0 x 80	40	PZ3	100	8	192
80100HF	8.0 x 100	60	PZ3	100	8	192
80120HF	8.0 x 120	80	PZ3	100	6	144
80140HF	8.0 x 140	100	PZ3	100	6	144

NHFO1

Product Code	Size (mm)	MFT (mm)	Driver Bit Size	Pack Qty (pcs)	Carton Qty (packs)	Pallet Qty (packs)
TIMBAG						
60040HFB	6.0 x 40	15	PZ2	135	5	600
60060HFB	6.0 x 60	35	PZ2	100	5	600
60080HFB	6.0 x 80	55	PZ2	80	5	600
80100HFB	8.0 x 100	60	PZ3	40	5	600

BAG27

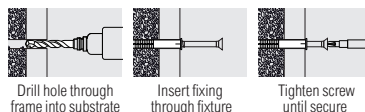
Product Code	Size (mm)	MFT (mm)	Driver Bit Size	Pack Qty (pcs)	Carton Qty (packs)	Pallet Qty (packs)
TIMPAC						
60040HFP	6.0 x 40	15	PZ2	10	5	-
60060HFP	6.0 x 60	35	PZ2	10	5	-
60080HFP	6.0 x 80	55	PZ2	10	5	-
80100HFP	8.0 x 100	60	PZ3	8	5	-

PAK39

Nylon Frame Fixings

Zinc

A versatile and reliable fixing for attaching to brick, block, stone, masonry and concrete.



20-70KG

Technical Data

Substrate	Fletton Brick 30N/mm ²		Cheshire Brick 45N/mm ²		Class B Eng. Brick 75N/mm ²		Concrete Block 7N/mm ²		Concrete $\geq 25\text{N/mm}^2$	
	8.0	10	8.0	10	8.0	10	8.0	10	8.0	10
Size \varnothing (mm)	8.0	10	8.0	10	8.0	10	8.0	10	8.0	10
Drill Hole (mm)	8.0	10	8.0	10	8.0	10	8.0	10	8.0	10
Min. Embedment Depth (mm)	40	50	40	50	40	50	40	50	40	50
Min. Drill Hole Depth (mm)	50	60	50	60	50	60	50	60	50	60
Rec. Tensile Load (kN)	0.25	0.46	0.44	0.65	0.43	0.38	0.20	0.24	0.50	0.70

Product Code	Size (mm)	MFT (mm)	Driver Bit Size	Pack Qty (pcs)	Carton Qty (packs)	Pallet Qty (packs)
BOX						
08080NFF	8.0 x 80	40	PZ3	100	8	192
08100NFF	8.0 x 100	60	PZ3	100	6	144
08120NFF	8.0 x 120	80	PZ3	100	6	144
10080NFF	10.0 x 80	30	PZ3	100	6	144
10100NFF	10.0 x 100	50	PZ3	100	4	96
10120NFF	10.0 x 120	70	PZ3	100	4	96
10140NFF	10.0 x 140	90	PZ3	100	4	96
10160NFF	10.0 x 160	110	PZ3	100	4	144

NFF01

Product Code	Size (mm)	MFT (mm)	Driver Bit Size	Pack Qty (pcs)	Carton Qty (packs)	Pallet Qty (packs)
TIMBAG						
08080NFFB	8.0 x 80	40	PZ3	50	5	600
08100NFFB	8.0 x 100	60	PZ3	40	5	600
10100NFFB	10.0 x 100	50	PZ3	30	5	600
10120NFFB	10.0 x 120	70	PZ3	25	5	600
10140NFFB	10.0 x 140	90	PZ3	20	5	600
10160NFFB	10.0 x 160	110	PZ3	15	5	600

BAG28

Product Code	Size (mm)	MFT (mm)	Driver Bit Size	Pack Qty (pcs)	Carton Qty (packs)	Pallet Qty (packs)
TIMPAC						
08080NFFP	8.0 x 80	40	PZ3	5	5	-
08100NFFP	8.0 x 100	60	PZ3	4	5	-
10100NFFP	10.0 x 100	50	PZ3	3	5	-
10120NFFP	10.0 x 120	70	PZ3	2	5	-
10140NFFP	10.0 x 140	90	PZ3	2	4	-
10160NFFP	10.0 x 160	110	PZ3	2	5	-

PAK40