

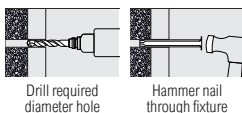
Express Nails

Zinc

An underestimated rapid hammer-set anchor for concrete and masonry, ideal for interior timber-work such as battens and frames.



CONCRETE BRICK STONE



28-150KG

Technical Data

Substrate	Concrete $\geq 25N/mm^2$		Fletton Brick 30N/mm ²		Cheshire Brick 45N/mm ²		Class B Eng. Brick 75N/mm ²	
	6.0	8.0	6.0	8.0	6.0	8.0	6.0	8.0
Size \varnothing (mm)	6.0	8.0	6.0	8.0	6.0	8.0	6.0	8.0
Drill Hole \varnothing (mm)	6.0	8.0	6.0	8.0	6.0	8.0	6.0	8.0
Fixture Clearance Hole \varnothing (mm)	7.0	9.0	7.0	9.0	7.0	9.0	7.0	9.0
Min. Embed. Depth (mm)	30	40	30	40	30	40	30	40
Min. Drill Hole Depth (mm)	40	50	40	50	40	50	40	50
Rec. Tensile Load (kN)	0.52	1.50	0.48	0.61	0.29	0.53	0.28	0.62
Max Rec. Load (kg)	52	150	48	61	29	53	28	62

Product Code	Size (mm)	MFT* (mm)	Pack Qty	Carton Qty	Pallet Qty
			(pcs)	(packs)	(packs)
BOX					
00650EN	6.0 x 50	20	200	16	384
00660EN	6.0 x 60	30	100	15	540
00680EN	6.0 x 80	50	100	15	540
00870EN	8.0 x 70	30	100	18	432
00890EN	8.0 x 90	50	50	35	840
08110EN	8.0 x 110	70	50	15	540
08130EN	8.0 x 130	90	50	15	540
08150EN	8.0 x 150	110	50	12	324
08180EN	8.0 x 180	140	50	12	288

TIMBAG					
00660ENB	6.0 x 60	30	90	5	600
00680ENB	6.0 x 80	50	70	5	600
00890ENB	8.0 x 90	50	45	5	600
08110ENB	8.0 x 110	70	35	5	600
08150ENB	8.0 x 150	110	30	5	600

TIMPAC					
00660ENP	6.0 x 60	30	8	5	-
00680ENP	6.0 x 80	50	6	5	-
00890ENP	8.0 x 90	50	6	5	-
08110ENP	8.0 x 110	70	4	5	-
08130ENP	8.0 x 130	90	6	5	-

*MFT = MAX FIXTURE THICKNESS

PKX38

Wirehangers

Zinc



CONCRETE

Specifically designed for use in the suspended ceiling industry when securing suspension wires to concrete beams.

• Conforms to BS 7671:2018



ALL STEEL NON-FLAMMABLE FIXING

188KG

Technical Data

Substrate	Concrete $\geq 25N/mm^2$
Size \varnothing (mm)	6.0
Drill Hole \varnothing (mm)	6.0
Embedment Depth (mm)	45
Min. Embedment Depth (mm)	50
Rec. Tensile Load (kN)	1.88
Max Rec. Load (kg)	188



Drill required diameter hole

Lightly tap the anchor into the hole

Set anchor using a claw hammer

Product Code	Size \varnothing x L (mm)	Eye \varnothing (mm)	Pack Qty (pcs)	Carton Qty (packs)	Pallet Qty (packs)
0660WH	6.0 x 60	6.3	100	16	640

BOX

WHG01

Ceiling Anchors

Zinc



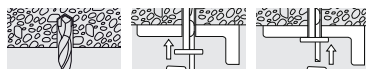
CONCRETE

A rapid light duty hammer-set anchor for attaching sheet metal, plastic or wood to concrete or masonry. Made from steel making it ideal for overhead applications.

72KG

Technical Data

Substrate	Concrete $\geq 25N/mm^2$
Size \varnothing (mm)	6.0
Drill Hole \varnothing (mm)	6.0
Fixture Clearance Hole \varnothing (mm)	6.5
Min. Embedment Depth (mm)	35
Min Drill Hole Depth (mm)	45
Rec. Tensile Load (kN)	0.72
Max Rec. Load (kg)	72



Drill required diameter hole

Insert fixing through attachment

Hammer wedge into anchor to secure

Product Code	Size \varnothing x L (mm)	MFT (mm)	Pack Qty (pcs)	Carton Qty (packs)	Pallet Qty (packs)
0640CAM	6.0 x 40	5	100	15	540
0665CAM	6.0 x 65	30	100	8	384

BOX

MFT = MAX FIXTURE THICKNESS.

CAM01

Ceiling Angle Brackets

Galvanised Steel



Versatile bracket most commonly used for installing suspended ceiling systems. Various hole sizes allow different fixings to be used.

Product Code	Size L x W x H (mm)	Hole \varnothing (mm)	Hole T (mm)	Pack Qty	Carton Qty	Pallet Qty
				(pcs)	(packs)	(packs)
25ABC	25 x 25 x 22	4.5 & 7.0	1.0	100	18	864

BOX

WHG03