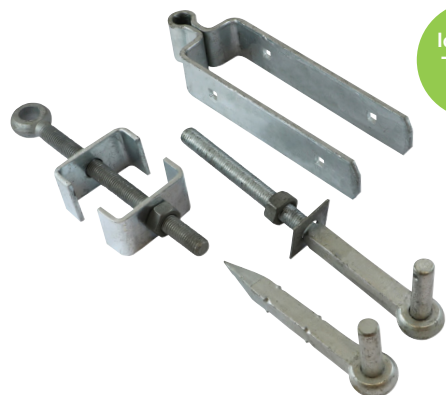




Adjustable Hinge Set

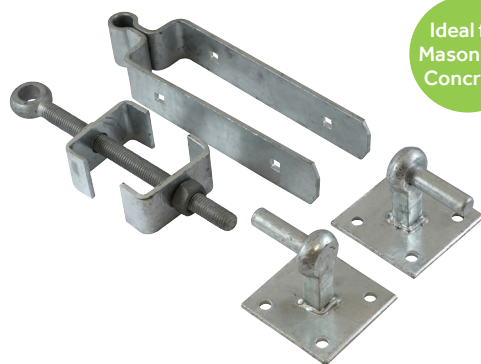


Ideal for Timber Posts

Ideal for use on field gates and driveway gates that are to be hung on timber posts. The hinge set provides exceptional support to the gate as the top band wraps around the gate and is fixed with cup square bolts to firmly secure in place. The bottom fitting clamps around the heel of the gate and is adjustable to allow for easy gate alignment after fitting. This is particularly useful when hanging pairs of gates. The hook to bolt features a 9mm drilled hole for R clips or lynch pins (not included) to be fitted to prevent the gate being lifted off. The hooks to drive are barbed to prevent the gate from working loose. Depending on the weight distribution of the gate, the top or bottom pin can be mounted upside down to prevent unwanted removal of the gate.

- Contents:
- 1 x Top Strap
 - 1 x Adjustable Bottom Fitting
 - 1 x Gate Hook to Drive
 - 1 x Hook to Bolt
 - M10 x 95 Galvanised Cup Square Bolts
 - M10 Hex Nuts & Washers

Adjustable Hinge Set with Hook on Plate



Ideal for Masonry & Concrete

Ideal for use on field gates and driveway gates that are to be hung on timber, concrete or masonry posts. The hinge set provides exceptional support to the gate as the top band wraps around the gate and are fixed with cup square bolts to firmly secure in place. The bottom fitting clamps around the heel of the gate and is adjustable to allow for easy gate alignment after fitting. Depending on the weight distribution of the gate, the top or bottom pin can be mounted upside down to prevent unwanted removal of the gate.

- Contents:
- 1 x Top Strap
 - 1 x Adjustable Bottom Gate Fitting
 - 2 x Hook on Plates
 - M10 x 95 Galvanised Cup Square Bolts
 - M10 Hex Nuts & Washers
 - M10 x 65mm Galvanised Coach Screws

Field Gate Information			
To Suit Gate Width	3-4ft/ 900-1200mm	4-9ft/ 1200-2700mm	9-12ft/ 2700-3600mm
To Suit Gate Thickness	3"/75mm	3"/75mm	3"/75mm

Product Dimensions			
Top Strap Length	12"/300mm	18"/450mm	24"/600mm
Strap Thickness	6mm	6mm	6mm
Hook To Bolt Ø x Length (mm)	M20 x 350	M20 x 350	M20 x 350
Gate Eye Size Ø x Length (mm)	M19 x 250	M19 x 250	M19 x 250
Heel Clip Size Length x Width x Depth (mm)	86 x 50 x 32	86 x 50 x 32	86 x 50 x 32
Hook to Drive Size (mm)	215 x 22	215 x 22	215 x 22
Pin Ø	3/4" / 19mm	3/4" / 19mm	3/4" / 19mm

Fixings Information			
No. of Carriage Bolts	2	3	3
Carriage Bolt Ø (mm)	M10	M10	M10

Product Code	Top Strap Length (inch)	Top Strap Length (mm)	To Suit Gate Width (ft)	To Suit Gate Width (mm)	Pack Qty (pcs)	Carton Qty (packs)
Hot Dipped Galvanised						
BAG - FIXINGS INCLUDED						
AFH300G	12	300	3-4	900-1200	1	4
AFH450G	18	450	4-9	1200-2700	1	4
AFH600G	24	600	9-12	2700-3600	1	4

FGS01

Field Gate Information			
To Suit Gate Width	3-4ft/ 900-1200mm	4-9ft/ 1200-2700mm	9-12ft/ 2700-3600mm
To Suit Gate Thickness	3"/75mm	3"/75mm	3"/75mm

Product Dimensions			
Top Strap Length	12"/300mm	18"/450mm	24"/600mm
Strap Thickness	6mm	6mm	6mm
Hook on Plate Length x Width (mm)	100 x 100	100 x 100	100 x 100
Gate Eye Size Ø x Length (mm)	M19 x 250	M19 x 250	M19 x 250
Heel Clip Size Length x Width x Depth (mm)	86 x 50 x 32	86 x 50 x 32	86 x 50 x 32
Pin Ø	3/4" / 19mm	3/4" / 19mm	3/4" / 19mm

Product Dimensions			
No. of Coach Screws	8	8	8
Coach Screws Ø (mm)	M10	M10	M10
No. of Carriage Bolts	2	3	3
Carriage Bolt Ø (mm)	M10	M10	M10

Product Code	Top Strap Length (inch)	Top Strap Length (mm)	To Suit Gate Width (ft)	To Suit Gate Width (mm)	Pack Qty (pcs)	Carton Qty (packs)
Hot Dipped Galvanised						
BAG - FIXINGS INCLUDED						
AFHP300G	12	300	3-4	900-1200	1	4
AFHP450G	18	450	4-9	1200-2700	1	4
AFHP600G	24	600	9-12	2700-3600	1	4

FGH01