

Door Catches & Latch

Bales Catch

Used for securing internal doors that require just a push/pull handle. Supplied with matching strike plate in electro brass.

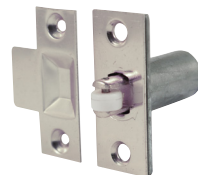


Technical Data	
Size (mm)	20
Case D x Ø (mm)	20 x 21
Faceplate H x W (mm)	57 x 23

Product Code				
Electro Brass	Size (mm)	Pack Qty (pcs)	Carton Qty (packs)	
BAG - EXCLUDES FIXINGS				
BC19BG	20	50	4	
TIMPAC - EXCLUDES FIXINGS				
BC19P	20	2	5	BSA08

Adjustable Roller Catch

Used for securing internal doors that require just a push/pull handle. Adjustable roller to adjust the closing tension of the door. Supplied with matching strike plate in electro brass or nickel plated finishes.



Technical Data	
Size (mm)	39
Case D x Ø (mm)	39 x 19
Faceplate H x W (mm)	59 x 23.5

Product Code				
Electro Brass	Nickel	Size (mm)	Pack Qty (pcs)	Carton Qty (packs)
BAG - EXCLUDES FIXINGS				
ARCBRASSBG	ARCNICKELBG	39	50	2
TIMPAC - EXCLUDES FIXINGS				
ARCBRASSP	ARCNICKELP	39	1	5 BSA08

Magnetic Catch

A surface mounted magnetic catch for securing cupboard or cabinet doors.



Product Code				
White	Size (mm)	Strength (kg)	Pack Qty (pcs)	Carton Qty (packs)
BAG - EXCLUDES FIXINGS				
MC4BG	40 x 22	4.0	100	4
MC6BG	58 x 22	6.0	100	4
TIMPAC - EXCLUDES FIXINGS				
MC4P	40 x 22	4.0	2	5
MC6P	58 x 22	6.0	2	5 BSA08

Double Ball Catch

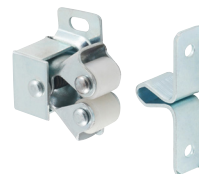
A solid brass push fit catch for securing cupboard or cabinet doors.



Product Code				
Electro Brass	Chrome	Size (mm)	Pack Qty (pcs)	Carton Qty (packs)
BAG - EXCLUDES FIXINGS				
DBC40BRASSBG	DBC40CHROMEGB	43	50	10
DBC50BRASSBG	DBC50CHROMEGB	50	50	10
TIMPAC - EXCLUDES FIXINGS				
DBC40BRASSP	DBC40CHROMECP	43	2	5
DBC50BRASSP	DBC50CHROMECP	50	2	5 BSA08

Double Roller Catch

A surface mounted push fit catch for securing cupboard or cabinet doors.



Product Code			
Zinc	Size (mm)	Pack Qty (pcs)	Carton Qty (packs)
BAG - EXCLUDES FIXINGS			
DRBG	28 x 32	50	6
TIMPAC - EXCLUDES FIXINGS			
DRP	28 x 32	2	5 BSA08

Cupboard Catch NEW

Ideal for cupboard doors to hold in a closed position. Catch can be released by turning the knob.

- Made from steel
- Sprung catch
- Surface mounted



Product Code				
Nickel	Size (mm)	Projection (mm)	Pack Qty (pcs)	Carton Qty (packs)
BAG - FIXINGS INCLUDED				
204321	38 x 56 x 30	6.5	1	10
TIMPAC - FIXINGS INCLUDED				
204321P	38 x 56 x 30	6.5	1	10 CBH01

Small Cupboard Lock NEW

Fits to the inside of a door and is key operated from the outside.

- Suitable for doors up to 30mm thickness
- Two keys included



Product Code					
Electro Brass	Size (mm)	Projection (mm)	Backset (mm)	Pack Qty (pcs)	Carton Qty (packs)
BAG - FIXINGS INCLUDED					
204672	64 x 32	10	16	1	10
TIMPAC - FIXINGS INCLUDED					
204672P	64 x 32	10	16	1	10 CBH01

Touch Latch NEW

Commonly used on loft hatches and cupboard doors. Simply push to open and push to close.

- Made from steel
- Face fixing
- Hidden latch



Product Code			
Zinc	Size (mm)	Pack Qty (pcs)	Carton Qty (packs)
BAG - FIXINGS INCLUDED			
204789	77 x 35 x 20	1	10
TIMPAC - FIXINGS INCLUDED			
204789P	77 x 35 x 20	1	10 CBH01