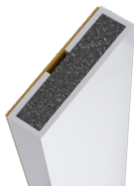


Intumescent Accessories



Intumescent Fire Only Seals

- Tested to BS476 Part 22, BS EN 1634-1
- Laboratory ageing tested for 100 years
- Rapid high-pressure multi-directional expansion
- Supplied with self adhesive backing for ease of installation

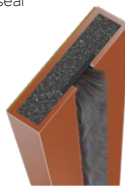


Product Code		WxD (mm)	L (mm)	Fire Rating (mins)	Pack Qty (pcs)	Carton Qty (packs)
White	Brown					
SINGLE DOOR PACK						
487762	487284	10 x 4	1050	30	5	20
487661	487097	15 x 4	1050	30 & 60	5	20
BULK PACK						
487053	487964	10 x 4	2100	30	50	4
487222	487773	15 x 4	2100	30 & 60	50	4

ITS01

Intumescent Fire & Smoke Seals

- Supplied with additional brush seal to slow the spread of smoke
- Tested to BS476 Part 22, BS EN 1634-1
- Laboratory ageing tested for 100 years
- Rapid high-pressure multi-directional expansion
- Supplied with self adhesive backing for ease of installation



Product Code		WxD (mm)	L (mm)	Fire Rating (mins)	Pack Qty (pcs)	Carton Qty (packs)
White	Brown					
SINGLE DOOR PACK						
487854	487336	10 x 4	1050	30	5	20
487746	487558	15 x 4	1050	30 & 60	5	20
BULK PACK						
487408	487671	10 x 4	2100	30	50	4
487239	487515	15 x 4	2100	30 & 60	50	4

ITS01

Intumescent Hinge Pads

Intumescent hinge pads are an essential requirement when fitting hinges to fire doors as they seal any gaps in the rebate and prevent the transfer of heat from the frame to the door and frame in the event of a fire.



- Tested to BS476 Part 22, BS EN 1634-1

Product Code	W x L (mm)	Depth (mm)	Fire Rating (mins)	Pack Qty (pcs)	Carton Qty (packs)
BAG					
487385	31 x 100	1.0	30	6	250
TIMPAC					
487492	18 x 75	1.0	30 & 60	6	200
487357	30 x 100	1.0	30 & 60	6	200

ITS02

Universal Intumescent Tubular Latch, Deadlock & Sashlock Kits

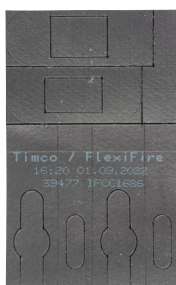
TIMCO FlexiFire HS is a graphite-based elastomeric sheet material custom cut for use on rebated hardware such as tubular latches, deadlocks and sashlocks. FlexiFire HS has an expansion ratio in excess of 15 times its original volume.

- Safe to handle and easy to use (no PPE required)
- Excellent temperature insulation before and after exfoliation
- Completely non-toxic and non-fibrous
- Unaffected by moisture, humidity, atmospheric pollution
- When heated to approximately 180°C graphite located at the surface begins to exfoliate
- FlexiFire has been tested extensively to both
- BS476 Part 22 & EN1634-1

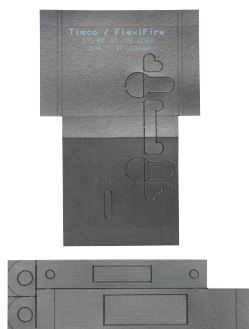
Product Code	Size	Thickness (mm)	Fire Rating (mins)	Pack Qty (pcs)	Carton Qty (packs)
TIMPAC					
TUBULAR LATCH KIT					
487050	Universal	1.0	30 & 60	1	100
DEADLOCK KIT					
487677	Universal	1.0	30 & 60	1	100
SASHLOCK KIT					
487359	Universal	1.0	30 & 60	1	100

ITS02

Tubular Latch



Deadlock



Sashlock



B1 Fill & Fix Fire Rated Expanding PU Foam

- 4 hours fire resistance for use with 30 & 60 minute fire doors
- Tested in accordance with BS 476-20, EN1366-4, EN13501 & DIN4102-1

See page
199

