

Fire Door Hinges

Ball Bearing Fire Door Hinges

- Smooth ball bearing action
- Suitable for 30 & 60 minute fire doors
- For doors with heavy traffic - tested to 200,000 cycles
- CE Approved - BS EN 1935
- Fit with intumescent hinge pads (Not included) when fitting fire doors to adhere to fire regulations.



Technical Data			
Hinge Grade	13	11	7
Size L x W (mm)	101 x 76	101 x 76	76 x 50
Thickness (mm)	3.0	2.6	2.0
Knuckle Ø (mm)	14.2	12.5	11.0
Rec. Screw Ø (mm / imp)	5.0 / 10	5.0 / 10	4.5
Max. Door Weight (kg)	120	80	40



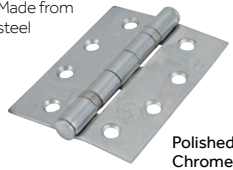
Grade 13

- Ideal for heavy doors up to 120kg
- Made from stainless steel



Grade 11

- Ideal for heavy doors up to 80kg
- Made from steel



Grade 7

- Ideal for heavy doors up to 40kg
- Made from steel



Product Code				L x W (mm)	Pack Qty (pair)	Carton Qty (packs)
Electro Brass	Polished	Satin	Matt Black			
GRADE 13 - STAINLESS STEEL						
BLISTER PACK						
334777	334843	334052	334161	101 x 76	1	5
334617	334080	334903	334741	101 x 76	1.5	5
BOX						
334027	334457	334111	334308	101 x 76	1	40
334006	334444	334519	334366	101 x 76	1.5	40

FHB01

Product Code				L x W (mm)	Pack Qty (pairs)	Carton Qty (packs)
Electro Brass	Polished Chrome	Satin Chrome	Satin Nickel			
GRADE 11 - STEEL						
TIMPAC						
334753P	334988P	334040P	-	101 x 76	1	10
BOX						
334753	334988	334040	334555	101 x 76	1	40

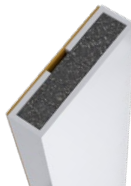
FHB03

Product Code				L x W (mm)	Pack Qty (pairs)	Carton Qty (packs)			
Electro Brass	Polished Chrome	Satin Chrome	Satin Nickel				Epoxy Black	Epoxy White	Antique Brass
GRADE 7 - STEEL									
TIMPAC									
334101P	334159P	334654P	-	334321P	-	76 x 50	1	10	
BOX									
334101	334159	334654	334789	334321	334267	334034	76 x 50	1	60

FHB02

Intumescent Accessories

Intumescent Fire Only Seals

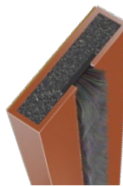


- Tested to BS476 Part 22, BS EN 1634-1
- Laboratory ageing tested for 100 years
- Rapid high-pressure multi-directional expansion
- Supplied with self adhesive backing for ease of installation

Product Code		W x D (mm)	L (mm)	Fire Rating (mins)	Pack Qty (pcs)	Carton Qty (packs)
White	Brown					
SINGLE DOOR PACK						
487762	487284	10 x 4	1050	30	5	20
487661	487097	15 x 4	1050	30 & 60	5	20
BULK PACK						
487053	487964	10 x 4	2100	30	50	4
487222	487773	15 x 4	2100	30 & 60	50	4

ITS01

Intumescent Fire & Smoke Seals



- Supplied with additional brush seal to slow the spread of smoke
- Tested to BS476 Part 22, BS EN 1634-1
- Laboratory ageing tested for 100 years
- Rapid high-pressure multi-directional expansion
- Supplied with self adhesive backing for ease of installation

Product Code		W x D (mm)	L (mm)	Fire Rating (mins)	Pack Qty (pcs)	Carton Qty (packs)
White	Brown					
SINGLE DOOR PACK						
487854	487336	10 x 4	1050	30	5	20
487746	487558	15 x 4	1050	30 & 60	5	20
BULK PACK						
487408	487671	10 x 4	2100	30	50	4
487239	487515	15 x 4	2100	30 & 60	50	4

ITS01

Intumescent Hinge Pads

NEW SIZES



Intumescent hinge pads are an essential requirement when fitting hinges to fire doors as they seal any gaps in the rebate and prevent the transfer of heat from the hinge to the door and frame in the event of a fire.

- Tested to BS476 Part 22, BS EN 1634-1

Product Code	W x L (mm)	Depth (mm)	Fire Rating (mins)	Pack Qty (pcs)	Carton Qty (packs)
BAG					
487385	31 x 100	1.0	30	6	250
TIMPAC					
487492	18 x 75	1.0	30 & 60	6	200
487357	30 x 100	1.0	30 & 60	6	200

ITS02