

Chemical Resin & Accessories

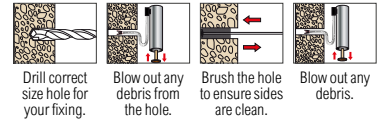


Chemical Resin

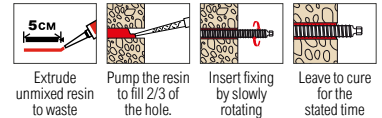


TIMCO's chemical resin range offers an effective anchoring system for fixing into concrete and masonry. The stress-free nature of this solution gives greater flexibility when anchoring closer to a substrate edge such as balustrade installation.

- Ready to use
- Uses standard tools
- Less wastage
- No leakage
- Faster & easier to use
- Low extrusion force
- T-Flow™ nozzle included
- Close edge & axial spacing



STEPS 2 - 4 REPEAT X4



Technical Data

| Resin Type | Rec. Tensile Load (Kn) (Performance Data Concrete >25N/Mm2) | | | | | |
|-------------------------|---|------|------|------|------|------|
| Stud (5.8 Grade) Size | M8 | M10 | M12 | M16 | M20 | M24 |
| PE | 4.9 | 7.5 | 10.6 | 12.3 | 19.9 | 27.4 |
| PESF | 5.8 | 8.1 | 11.6 | 19.8 | 29.1 | 33.1 |
| VESF | 9.1 | 13.8 | 19.4 | 26.8 | 35.7 | 44.6 |
| Embedment Depth (mm) | 80 | 90 | 110 | 125 | 170 | 210 |
| Cartridge Size | Approx Holes Per Cartridge (At Standard Embedment Depth) | | | | | |
| 300ml | 66 | 41 | 25 | 13 | 5 | 3 |
| 410ml | 92 | 57 | 34 | 18 | 8 | 4 |
| Gel & Cure Times | VESF / PESF / PE | | | | | |
| Base Material (°C) | 35 | 25 | 15 | 5 | -5 | -10* |
| Typical Gel Time (mins) | 3 | 5 | 9 | 20 | 40 | 50 |
| Min. Load Time (mins) | 20 | 30 | 60 | 90 | 180 | 240 |

*Resin temperature must be at least 20°C

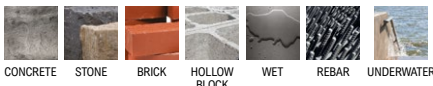
Vinylester Styrene Free



- European Technically Approved (ETA) low odour resin used in safety critical fixing
- For enclosed, poorly ventilated, damp and wet environments
- High performance resin with consistent results
- Offering exceptional tensile strength in a range of environments and conditions



1501537



| Product Code | Size | Approval | Carton Qty (packs) | Pallet Qty (packs) |
|---|-------|-----------------|--------------------|--------------------|
| CARTRIDGE (T-FLOW NOZZLE INCLUDED) | | | | |
| VESF300 | 300ml | ETA / WRAS / CE | 12 | 684 |
| VESF410 | 410ml | ETA / WRAS / CE | 12 | 672 |
| CPED1 | | | | |

Polyester Styrene Free



- European Technically Approved (ETA) low odour resin used in non-safety critical fixing
- For enclosed or poorly ventilated environments



| Product Code | Size | Approval | Carton Qty (packs) | Pallet Qty (packs) |
|---|-------|----------|--------------------|--------------------|
| CARTRIDGE (T-FLOW NOZZLE INCLUDED) | | | | |
| PESF310 | 300ml | ETA / CE | 12 | 684 |
| CPED1 | | | | |

Polyester



- An economic resin ideal for day to day non-safety critical applications
- For areas that are well ventilated at the time of installation



| Product Code | Size | Approval | MOQ Qty (packs) | Pallet Qty (packs) |
|---|-------|----------|-----------------|--------------------|
| CARTRIDGE (T-FLOW NOZZLE INCLUDED) | | | | |
| PE310 | 300ml | ETA/CE | 12 | 684 |
| PE410 | 410ml | ETA/CE | 12 | 672 |
| CPED1 | | | | |