

Throughbolts

Zinc

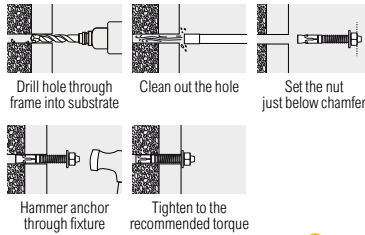


CONCRETE



A versatile through fixing for use in a wide range of anchoring applications into concrete.

NOTE: If no torque wrench is available, tighten the nut 3 to 4 full turns from finger tight.



292 - 1115KG

Technical Data

Substrate	Concrete $\geq 25\text{N/mm}^2$				
	M8	M10	M12	M16	M20
Size \varnothing (mm)	M8	M10	M12	M16	M20
Socket Size (mm)	13	17	19	24	30
Drill Hole \varnothing (mm)	8.0	10.0	12.0	16.0	20.0
Fixture Clearance Hole \varnothing (mm)	9.0	12.0	14.0	18.0	22.0
Embedment Depth (mm)	35	45	50	65	80
Min. Drill Hole Depth (mm)	45	50	60	75	90
Centre Spacing (mm)	110	140	150	200	240
Edge Distance (mm)	55	70	75	100	120
Min. Structure Thickness (mm)	70	90	100	130	160
Rec. Tightening Torque (Nm)	15	30	45	100	160
Rec. Tensile Load (kN)	2.92	4.11	7.25	8.08	11.15
Max. Rec. Load (kg)	292	411	725	808	1115

Product Code	Thread $\varnothing \times L$ (mm)	Max. Thickness (mm)	Pack Qty (pcs)	Carton Qty (packs)	Pallet Qty (packs)
--------------	------------------------------------	---------------------	----------------	--------------------	--------------------

BOX

0850TB	M8 x 50	5	100	8	216
0865TB	M8 x 65	10	100	6	162
0880TB	M8 x 80	25	50	10	360
08100TB	M8 x 100	45	50	6	162
08130TB	M8 x 130	75	50	6	162
1065TB	M10 x 65	5	50	8	216
1075TB	M10 x 75	10	50	6	162
10100TB	M10 x 100	35	50	6	162
10120TB	M10 x 120	55	50	6	162
1280TB	M12 x 80	5	50	6	162
12100TB	M12 x 100	25	25	6	162
12120TB	M12 x 120	45	25	6	162
12140TB	M12 x 140	65	25	6	162
12180TB	M12 x 180	105	25	6	162
16105TB	M16 x 105	5	25	6	162
16125TB	M16 x 125	20	25	6	162
16150TB	M16 x 150	45	15	6	162
16175TB	M16 x 175	70	15	6	162
20130TB	M20 x 130	5	10	6	162
20160TB	M20 x 160	30	10	6	162
20215TB	M20 x 215	85	8	6	162

THB01

TIMBAG

0850TBB	M8 x 50	5	40	5	600
10100TBB	M10 x 100	35	18	5	600
12100TBB	M12 x 100	25	12	5	600
12140TBB	M12 x 140	65	10	5	600
12180TBB	M12 x 180	105	8	5	600

BAG29

TIMPAC

0850TBP	M8 x 50	5	4	10	-
10100TBP	M10 x 100	35	2	10	-
12100TBP	M12 x 100	25	2	10	-
12140TBP	M12 x 140	65	2	10	-

PAK46

Drop in Anchors

Zinc



CONCRETE

An internally threaded hammer set expansion anchor for heavy duty anchoring into concrete.

Standard version can be inserted below the surface. Also known as wedge anchors.

129 - 935KG

Technical Data

Substrate	Concrete $\geq 25\text{N/mm}^2$			
	M6	M8	M10	M12
Size \varnothing (mm)	M6	M8	M10	M12
Drill Hole \varnothing (mm)	8.0	10.0	12.0	16.0
Embedment Depth (mm)	25	30	40	50
Min Drill Hole Depth (mm)	25	30	40	50
Centre Spacing (mm)	75	90	120	150
Edge Distance (mm)	75	90	120	150
Min Structure Thickness (mm)	100	100	100	125
Rec. Tightening Torque (Nm)	3	5	7	16
Rec. Tensile Load (kN)	1.29	2.22	4.65	9.35
Max Rec. Load (kg)	129	222	465	935

Product Code	Thread $\varnothing \times L$ (mm)	Anchor Length (mm)	Min. HD (mm)	FCH \varnothing (mm)	Pack Qty (pcs)	Carton Qty (packs)	Pallet Qty (packs)
06WA	M6 x 10	25	25	8.0	100	20	1380
08WA	M8 x 14	30	30	10.0	100	12	648
10WA	M10 x 15	40	40	12.0	50	12	816
12WA	M12 x 20	50	50	14.0	50	6	324

HD = HOLE DEPTH. FCH = FIXTURE CLEARANCE HOLE. WGA01

Lipped Drop in Anchors

Zinc



CONCRETE

An internally threaded hammer set expansion anchor for heavy duty anchoring into concrete.

Lip prevents the anchor being inserted too far. Also known as wedge anchors.

222 - 316KG

Technical Data

Substrate	Concrete $\geq 25\text{N/mm}^2$	
	M8	M10
Size \varnothing (mm)	M8	M10
Drill Hole \varnothing (mm)	10.0	12.0
Embedment Depth (mm)	30	30
Min Drill Hole Depth (mm)	30	30
Centre Spacing (mm)	90	90
Edge Distance (mm)	90	90
Min Structure Thickness (mm)	100	100
Rec. Tightening Torque (Nm)	5	7
Rec. Tensile Load (kN)	2.22	3.16
Max Rec. Load (kg)	222	316

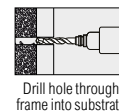
Product Code	Thread $\varnothing \times L$ (mm)	Anchor Length (mm)	Min. HD (mm)	FCH \varnothing (mm)	Pack Qty (pcs)	Carton Qty (packs)	Pallet Qty (packs)
08LWA	M8 x 14	30	30	10	100	12	720
1030LWA	M10 x 15	30	30	12	50	12	816

HD = HOLE DEPTH. FCH = FIXTURE CLEARANCE HOLE. WGA01

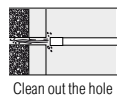
Setting Tool



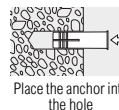
Setting tool for use with standard and lipped drop in anchors.



Drill hole through frame into substrate



Clean out the hole



Place the anchor into the hole



Insert setting tool and hammer to set

Product Code	To Fit Thread \varnothing (mm)	Pack Qty (pcs)	Carton Qty (packs)	Pallet Qty (packs)
06WAS	M6	1	10	360
08WAS	M8	1	10	360
10WAS*	M10	1	10	360
12WAS	M12	1	10	360

WGA01

* To suit 40mm anchor length