

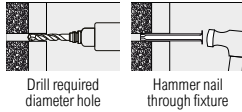
Express Nails

Zinc

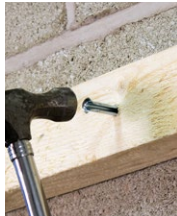
An underestimated rapid hammer-set anchor for concrete and masonry, ideal for interior timber-work such as battens and frames.



CONCRETE BRICK STONE



Drill required diameter hole Hammer nail through fixture



28-150KG

Technical Data

Substrate	Concrete $\geq 25N/mm^2$		Fletton Brick 30N/mm <sup>2</sup>		Cheshire Brick 45N/mm <sup>2</sup>		Class B Eng. Brick 75N/mm <sup>2</sup>	
	Size $\emptyset$ (mm)	Drill Hole $\emptyset$ (mm)	Size $\emptyset$ (mm)	Drill Hole $\emptyset$ (mm)	Size $\emptyset$ (mm)	Drill Hole $\emptyset$ (mm)	Size $\emptyset$ (mm)	Drill Hole $\emptyset$ (mm)
Size $\emptyset$ (mm)	6.0	8.0	6.0	8.0	6.0	8.0	6.0	8.0
Drill Hole $\emptyset$ (mm)	6.0	8.0	6.0	8.0	6.0	8.0	6.0	8.0
Fixture Clearance Hole $\emptyset$ (mm)	7.0	9.0	7.0	9.0	7.0	9.0	7.0	9.0
Min. Embed. Depth (mm)	30	40	30	40	30	40	30	40
Min. Drill Hole Depth (mm)	40	50	40	50	40	50	40	50
Rec. Tensile Load (kN)	0.52	1.50	0.48	0.61	0.29	0.53	0.28	0.62
Max Rec. Load (kg)	52	150	48	61	29	53	28	62

Product Code	Size (mm)	MFT* (mm)	Pack Qty (pcs)	Carton Qty (packs)	Pallet Qty (packs)
--------------	-----------	-----------	----------------	--------------------	--------------------

BOX

00650EN	6.0 x 50	20	200	8	240
00660EN	6.0 x 60	30	100	10	300
00680EN	6.0 x 80	50	100	10	300
00870EN	8.0 x 70	30	100	10	300
00890EN	8.0 x 90	50	50	18	648
08110EN	8.0 x 110	70	50	10	300
08130EN	8.0 x 130	90	50	10	300
08150EN	8.0 x 150	110	50	8	240
08180EN	8.0 x 180	140	50	8	240

TIMBAG

00660ENB	6.0 x 60	30	90	5	600
00680ENB	6.0 x 80	50	70	5	600
00890ENB	8.0 x 90	50	45	5	600
08110ENB	8.0 x 110	70	35	5	600
08150ENB	8.0 x 150	110	30	5	600

TIMPAC

00660ENP	6.0 x 60	30	8	5	-
00680ENP	6.0 x 80	50	6	5	-
00890ENP	8.0 x 90	50	6	5	-
08110ENP	8.0 x 110	70	4	5	-
08130ENP	8.0 x 130	90	6	5	-

\*MFT = MAX FIXTURE THICKNESS

PKA38

Wirehangers

Zinc



CONCRETE

Specifically designed for use in the suspended ceiling industry when securing suspension wires to concrete beams.

- Conforms to BS 7671:2018

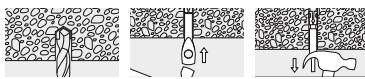


ALL STEEL NON-FLAMMABLE FIXING

188KG

Technical Data

Substrate	Concrete $\geq 25N/mm^2$
Size $\emptyset$ (mm)	6.0
Drill Hole $\emptyset$ (mm)	6.0
Embedment Depth (mm)	45
Min. Embedment Depth (mm)	50
Rec. Tensile Load (kN)	1.88
Max Rec. Load (kg)	188



Drill required diameter hole Lightly tap the anchor into the hole Set anchor using a claw hammer

Product Code	Size $\emptyset$ x L (mm)	Eye $\emptyset$ (mm)	Pack Qty (pcs)	Carton Qty (packs)	Pallet Qty (packs)
--------------	---------------------------	----------------------	----------------	--------------------	--------------------

BOX

0660WH	6.0 x 60	6.3	100	18	648
--------	----------	-----	-----	----	-----

WHG01

Ceiling Anchors

Zinc



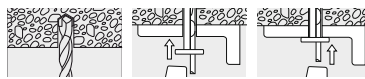
CONCRETE

A rapid light duty hammer-set anchor for attaching sheet metal, plastic or wood to concrete or masonry. Made from steel making it ideal for overhead applications.

72KG

Technical Data

Substrate	Concrete $\geq 25N/mm^2$
Size $\emptyset$ (mm)	6.0
Drill Hole $\emptyset$ (mm)	6.0
Fixture Clearance Hole $\emptyset$ (mm)	6.5
Min. Embedment Depth (mm)	35
Min Drill Hole Depth (mm)	45
Rec. Tensile Load (kN)	0.72
Max Rec. Load (kg)	72



Drill required diameter hole Insert fixing through attachment Hammer wedge into anchor to secure

Product Code	Size $\emptyset$ x L (mm)	MFT (mm)	Pack Qty (pcs)	Carton Qty (packs)	Pallet Qty (packs)
--------------	---------------------------	----------	----------------	--------------------	--------------------

BOX

0640CAM	6.0 x 40	5	100	10	300
0665CAM	6.0 x 65	30	100	8	240

MFT = MAX FIXTURE THICKNESS.

CAM01

Vertical Flange Clips

Yellow



High strength vertical flange clip for fixing suspended wire and lighting to steel purlin.

Must only be used in a vertical position

72KG

Technical Data

Size (mm)	20 x 42
Max Rec. Load (kg)	72

Product Code	Size W x L (mm)	Hole $\emptyset$ (mm)	Pack Qty (pcs)	Carton Qty (packs)	Pallet Qty (packs)
--------------	-----------------	-----------------------	----------------	--------------------	--------------------

BOX

VFC2042	20 x 42	6.5	100	10	500
---------	---------	-----	-----	----	-----

WHG02

Ceiling Angle Brackets

Galvanised Steel



Versatile bracket most commonly used for installing suspended ceiling systems. Various hole sizes allow different fixings to be used.

Product Code	Size L x W x H (mm)	Hole $\emptyset$ (mm)	T (mm)	Pack Qty (pcs)	Carton Qty (packs)	Pallet Qty (packs)
--------------	---------------------	-----------------------	--------	----------------	--------------------	--------------------

BOX

25ABC	25 x 25 x 22	4.5 & 7.0	1.0	100	18	864
-------	--------------	-----------	-----	-----	----	-----

WHG03