

Nail In Pipe Clips



Manufactured from premium grade polypropylene features a high quality zinc plated hardened and tempered nail, suitable for all types of masonry. Available in red for marking hot water pipework.

Product Code	Colour	To Suit Pipe Size (mm)	Pack Qty (pcs)
BAG			
NCW10	White	10	50
NCW15	White	15	50
NCW22	White	22	50
TALNCH15	Red	15	100
TALNCH1520	Red	15	20
TALNCH22	Red	22	100
TALNCH2220	Red	22	20

PPC01

Snappit Kits



Snappit is a rigid pipe finish product that is great for covering unsightly, visible, copper pipework. It is the best, mess-free, alternative to paint - saving time and improving appearance.

Product Code	Colour	To Suit Pipe Size (mm)	Size (mm)	Pack Qty (pcs)
BAG - KIT				
TALACSNA	Anthractive Grey	15	15 x 200	2
TALACSNB	Black	15	15 x 200	2
TALACSNC	Chrome	15	15 x 200	2
TALACSNRG	Rose Gold	15	15 x 200	2
TALACSNW	White	15	15 x 200	2

PPC01

Pipe Collars

Specifically designed for soil and most boiler vent pipes, the 110mm pipe collar is available in other colours to suit application.



- For 110mm pipes

Product Code	Colour	To Suit Pipe Size (mm)	Pack Qty (pcs)
BAG			
TALPC110BL	Black	110	1
TALPC110C	Chrome	110	1
TALPC110GR	Grey	110	1
TALPC110WH	White	110	1

PPC01



Pipe collars to conceal unsightly incisions through floors and walls. Ideal for new or retrofit application.

Available in a wide range of sizes to fit various pipe sizes. Manufactured from high-grade polypropylene.

Product Code	Colour	To Suit Pipe Size (mm)	Pack Qty (pcs)
BAG			
TALPC1510	White	15	10
TALPC2210	White	22	10
TALPC2810	White	28	10
TALPCC1510	Chrome	15	10
TALPCC2210	Chrome	22	10
TALPCC2810	Chrome	28	10

PPC01

Intumescent Pipe Collars

4 hour fire rating in vertical & horizontal applications

Tab closing device & welded lugs for quick & easy installation



Can be face fixed in a wall or ceiling structure

Suitable for use on concrete, masonry & plasterboard partitions*

Designed for retro-fit to plastic piping or trunking where it passes through fire resistant structures such as walls or floors. In the event of a fire, the collar's intumescent core rapidly expands to crush the pipe or trunking, which seals off the area and maintains the fire integrity of the structural element.

- Stainless Steel outer casing
- Tested to BS EN 1366-3, BS476 part 20
- Can be face fixed in a wall or ceiling structure
- Intumescent material unaffected by water, non-flaking and difficult to tear
- Suitable for use on concrete, masonry and plasterboard partitions (PPC25 - PPC160 only*)
- Soil, waste and drainage 'above ground' applications
- 10 year guarantee

Product Code	Size Ø x H (mm)	To Suit Pipe Size (mm)	Pack Qty (pcs)
BAG			
487864	75 x 60	55	1
487566	95 x 60	82	1
487090	130 x 60	110	1
487444	195 x 60	160	1

PPF02

Intumescent Pipe Wraps

4 hour fire rating in vertical & horizontal applications

Easy to place around pipes & trunking to slide into position



Soil, waste & drainage 'above ground' applications

Can be used with concrete & masonry walls & concrete floor constructions

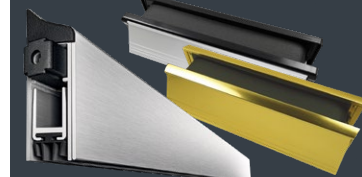
Designed for installation around plastic piping or trunking passing through fire resistant structures such as walls and doors. During the primary construction phase of a product, i.e. casting floors, an additional tolerance is in built to enable the fitting of a pipe wrap once the mechanical and electrical services have been installed. In the event of a fire the contained intumescent material rapidly expands and crushes the pipe or trunking, sealing off this area and maintaining the integrity of the structural elements through which it passes.

Product Code	L x W x T (mm)	To Suit Pipe Size (mm)	Pack Qty (pcs)
BAG			
487672	210 x 80 x 5	55	1
487289	285 x 80 x 5	82	1
487664	385 x 80 x 5	110	1
487352	540 x 80 x 5	160	1

T=THICKNESS

PPF02

Intumescent Letterbox & Applique Drop Down Seals



See page 245

- Tested to BS EN 1366-3, BS476 part 20
- Intumescent material unaffected by water, non-flaking and difficult to tear
- 10 year guarantee