

Carriage Bolts (DIN603) & Hex Nuts (DIN934)

A2 AUSTENITIC STAINLESS STEEL



DOME



EN 14592:2008

A cup square carriage bolt in A2 stainless steel. A full metric fine thread. Nut included in TIMPAC only.

Product Code	Size (mm)	Nut Socket Size (mm)	Pack Qty (pcs)	Carton Qty (packs)
TIMPAC				
08100CBSSP	M8 x 100	13	4	5
08130CBSSP	M8 x 130	13	3	5
08150CBSSP	M8 x 150	17	2	5
1075CBSSP	M10 x 75	17	3	5
10100CBSSP	M10 x 100	17	2	5
10120CBSSP	M10 x 120	17	2	5
10130CBSSP	M10 x 130	17	2	5
10150CBSSP	M10 x 150	13	2	5
12100CBSSP	M12 x 100	19	2	5
12130CBSSP	M12 x 130	19	2	5

PAK25

Carriage Bolts (DIN603)

A2 AUSTENITIC STAINLESS STEEL



Product Code	Size (mm)	Pack Qty (pcs)	Carton Qty (packs)	Pallet Qty (packs)
BOX				
0625CBSS	M6 x 25	200	8	288
0650CBSS	M6 x 50	200	5	180
1075CBSS	M10 x 75	50	6	216
12100CBSS	M12 x 100	50	3	108
12110CBSS	M12 x 110	25	6	216

CAS01

Product Code	Size (mm)	Pack Qty (pcs)	Carton Qty (packs)
SMALL BAG			
0625CBSSX	M6 x 25	10	200
0630CBSSX	M6 x 30	10	100
0640CBSSX	M6 x 40	10	100
0650CBSSX	M6 x 50	10	100
0675CBSSX	M6 x 75	10	50
06100CBSSX	M6 x 100	10	50
0840CBSSX	M8 x 40	10	100
0850CBSSX	M8 x 50	5	100
0860CBSSX	M8 x 60	5	100
0875CBSSX	M8 x 75	5	100
0880CBSSX	M8 x 80	5	100
08100CBSSX	M8 x 100	5	50
08130CBSSX	M8 x 130	5	50
08150CBSSX	M8 x 150	5	50
1075CBSSX	M10 x 75	5	50
1090CBSSX	M10 x 90	5	50
10100CBSSX	M10 x 100	5	50
10110CBSSX	M10 x 110	5	50
10120CBSSX	M10 x 120	5	50
10130CBSSX	M10 x 130	5	50
10150CBSSX	M10 x 150	5	30
1275CBSSX	M12 x 75	5	50
12100CBSSX	M12 x 100	5	30
12110CBSSX	M12 x 110	5	30
12130CBSSX	M12 x 130	5	30

SSB05

Exterior Carriage Bolts, Nuts & Washers

Exterior (Silver Organic)



DOME

EN 14592:2008

A domed head bolt with a square anti-spin shoulder mainly used for clamping timber or attaching ironmongery to timber.

Coated with a patented multi-layer corrosion resistant plating to withstand 1,000 hours salt spray test making it ideal for external applications.

Supplied with hex nuts and form A washers.

Product Code	Size (mm)	Nut Socket Size (mm)	Pack Qty (pcs)	Carton Qty (packs)	Pallet Qty (packs)
TIMBAG					
0640CBI	M6 x 40	10	10	5	600
0650CBI	M6 x 50	10	10	5	600
0675CBI	M6 x 75	10	10	5	600
06100CBI	M6 x 100	10	10	5	600
0850CBI	M8 x 50	13	10	5	600
0875CBI	M8 x 75	13	10	5	600
08100CBI	M8 x 100	13	10	5	600
08110CBI	M8 x 110	13	10	5	600
08130CBI	M8 x 130	13	10	5	400
08150CBI	M8 x 150	13	10	5	400
1075CBI	M10 x 75	17	10	5	600
10100CBI	M10 x 100	17	10	5	600
10120CBI	M10 x 120	17	10	5	400
10130CBI	M10 x 130	17	10	5	400
10150CBI	M10 x 150	17	10	5	400
10180CBI	M10 x 180	17	10	5	400
1275CBI	M12 x 75	19	10	5	600
12100CBI	M12 x 100	19	10	5	400
12130CBI	M12 x 130	19	10	5	400

CAB03

Exterior (Green Organic)



A domed head bolt with a square anti-spin shoulder mainly used for clamping timber or attaching ironmongery to timber. Coated with a patented multi-layer corrosion resistant plating to withstand 500 hours salt spray making it ideal for external applications.

Manufactured to DIN 603, DIN 934 and DIN 125-A.

Product Code	Size (mm)	Nut Socket Size (mm)	Pack Qty (pcs)	Carton Qty (packs)	Pallet Qty (packs)
BAG					
10100INC	M10 x 100	17	10	10	1000
10150INC	M10 x 150	17	10	6	600
10160INC	M10 x 160	17	10	6	600
10200INC	M10 x 200	17	10	6	600
10220INC	M10 x 220	17	10	5	500

IND04

HDG Carriage Bolts & Hex Nuts

Hot Dipped Galvanised



DOME

EN 14592:2008

A domed head bolt with a square anti-spin shoulder mainly used for clamping timber or attaching ironmongery to timber.

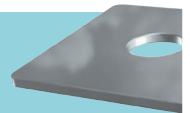
Fully threaded up to and including 150mm. Partially threaded thereafter.

Supplied with hex nuts. Manufactured to DIN 603 and DIN 934.

Product Code	Size (mm)	Nut Socket Size (mm)	Pack Qty (pcs)	Carton Qty (packs)	Pallet Qty (packs)
BOX					
0850CBG	M8 x 50	13	100	9	288
0875CBG	M8 x 75	13	50	9	288
08130CBG	M8 x 130	13	50	6	288
08150CBG	M8 x 150	13	25	10	192
1075CBG	M10 x 75	17	50	8	320
10100CBG	M10 x 100	17	25	9	256
10110CBG	M10 x 110	17	25	9	288
10130CBG	M10 x 130	17	25	10	288
10150CBG	M10 x 150	17	25	6	320
10180CBG	M10 x 180	17	25	6	192
10200CBG	M10 x 200	17	10	10	192
1275CBG	M12 x 75	19	25	9	320
12100CBG	M12 x 100	19	25	6	288
12110CBG	M12 x 110	19	25	6	192
12130CBG	M12 x 130	19	10	10	192
12150CBG	M12 x 150	19	10	10	320
12180CBG	M12 x 180	19	10	10	320
12200CBG	M12 x 200	19	10	10	320

CAB02

Hot Dipped Galvanised Square Plate Washer



See page 61